



# STOCK MODEL CATALOG 2013

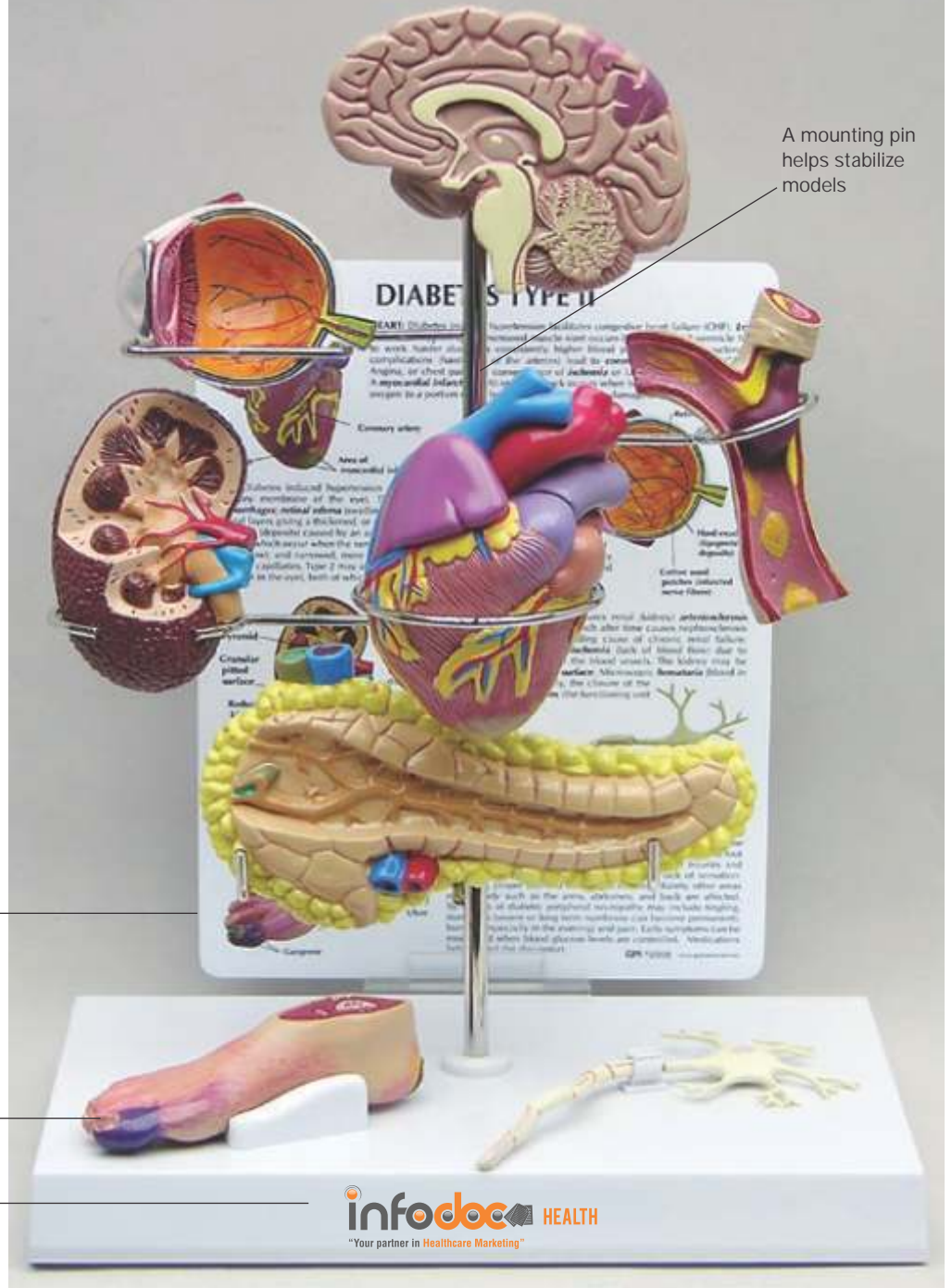
Ear | Eye | Sinus | Thyroid | Brain | Teeth |  
Cardiovascular | Digestive | Obesity |  
Metabolic Syndrome | Diabetes | Respiratory |  
Reproductive | Skin Conditions | Bone Conditions |  
Vertebrae | Joints |

**InfoDoc**  
“Your partner in Healthcare Marketing”  
**HEALTH**

The Experts in Anatomical Models

## NavigatingThis Catalog

- Ear ..... 2
- Eye .....3
- Sinus, Thyroid & Brain .....4
- Teeth .....5
- Cardiovascular ..... 6-7
- Digestive ..... 8-10
- Obesity .....10
- Metabolic Syndrome ..... 11
- Diabetes .....12
- Respiratory ..... 13
- Reproductive .....14-16
- Skin Conditions .....17
- Bone Conditions ..... 18-19
- Vertebrae .....20-21
- Joints .....22-26
- Veterinary ..... 27-31



Most models are available with an education card, which names anatomical parts and/or explains a demonstrated pathology. Customized education cards are available upon request

An example of an anatomical part showing pathology

Models available with customization options



## New Products for 2013



Page 20  
#1510 Sacrum T8 Spine



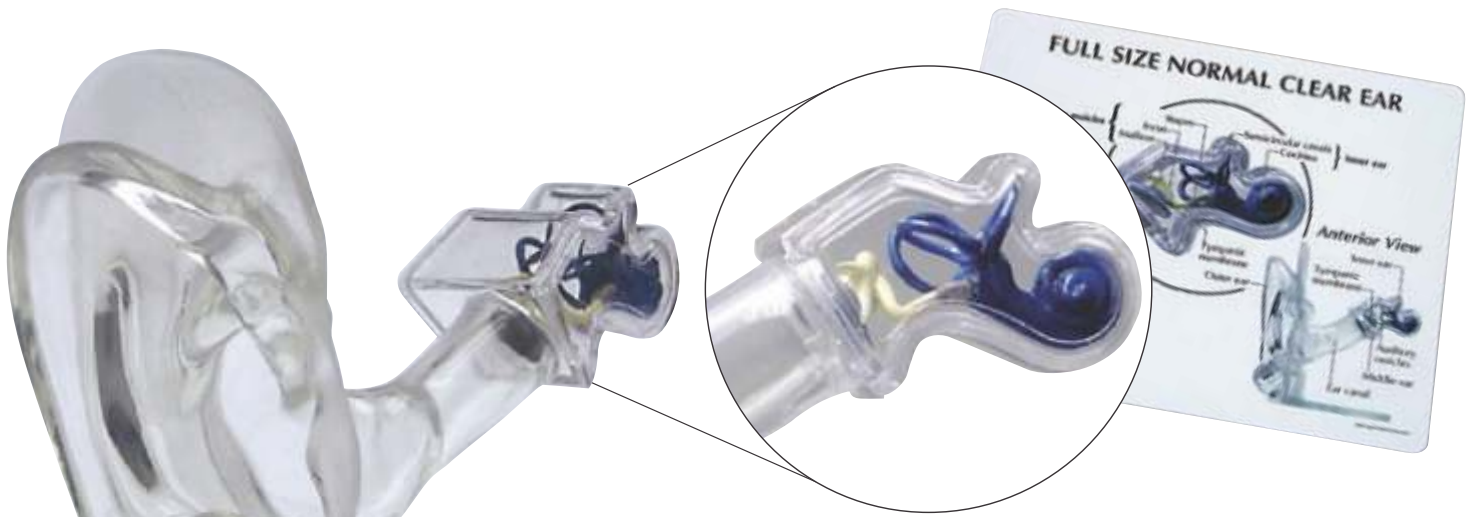
Page 11  
#4020 Metabolic Syndrome



Page 22  
#1010 Meniscus Tears



Page 27  
#9095 Canine Parasites



**#2251 FULL SIZE NORMAL CLEAR EAR**

Full size model of human ear is clear to aid viewing of ear canal, tympanic membrane, stapes, incus, malleus and cochlea of the inner ear.

*Model size: 3-1/8" x 3" x 2-3/8"*

*Card size: 6-1/2" x 5-1/4"*

*No Base*

**TOP SELLER**

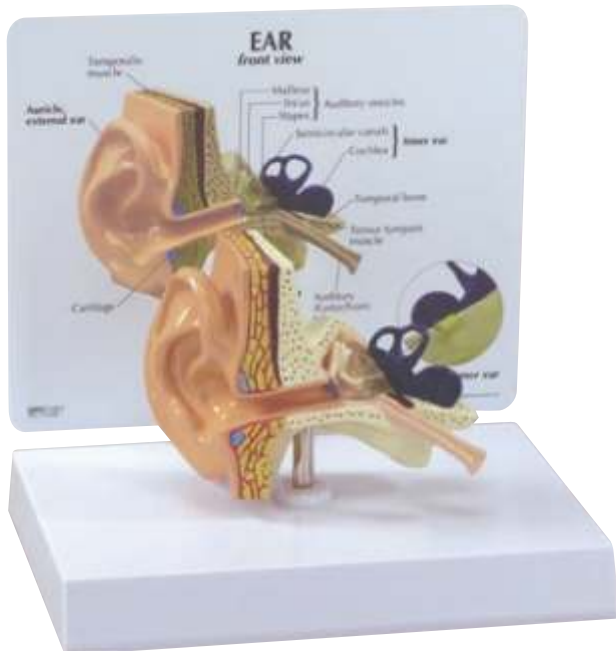
**#2250 EAR**

Full size normal model shows semi-circular canals and cochlea of the inner ear, auditory ossicles of the middle ear, tympanic membrane, temporal and tensor tympani muscles.

*Model size: 3-3/4" x 2-1/2" x 2-3/4"*

*Card size: 6-1/2" x 5-1/4"*

*Base size: 6-1/2" x 5"*



**#2300 CHILD EAR**

This oversized child's ear illustrates: semi-circular canals and cochlea of the inner ear, auditory ossicles, otitis media (inflammation and simulated fluid in the middle ear), tympanic membrane, temporal and tensor tympani muscles, the model also presents a horizontal eustachian tube typical of a child.

*Model size: 4-3/4" x 4" x 3-1/2"*

*Card size: 6-1/2" x 5-1/4"*

*Base size: 6-1/2" x 5"*





**#2800 CATARACT EYE**

Oversized normal eye model with cut-away to show inner anatomy. Includes five interchangeable lenses that show various types of cataract conditions including: subcapsular, capsular, cortical and nuclear. Lens and cornea are removable.

*Model size: 5" x 3" x 4"  
Card size: 6-1/2" x 5-1/4"  
Base size: 6-1/2" x 5"*

**TOP SELLER**



**#2750 EYE**

Oversized normal eye model with cut-away to show inner anatomy, including optic nerve, disc, macula, retina, central retinal artery and vein. Lens and cornea are removable.

*Model size: 5" x 3" x 4"  
Card size: 6-1/2" x 5-1/4"  
Base size: 6-1/2" x 5"*



**#2780 CORNEA EYE**

Oversized normal eye model with cut-away to show inner anatomy. Includes four interchangeable corneas that show various cornea conditions including: bullous keratopathy, Fuch's endothelial dystrophy, keratoconus and normal. Lens and cornea are removable.

*Model size: 5" x 3" x 4"  
Card size: 6-1/2" x 5-1/4"  
Base size: 6-1/2" x 5"*



**#2751 FULL EYE**

Oversized normal eye model with split shell construction to allow for viewing inner anatomy including optic nerve, disc, macula, retina, central retinal artery and vein. Lens and cornea are removable.

*Model size: 5" x 3" x 4"  
Card size: 6-1/2" x 5-1/4"  
Base size: 6-1/2" x 5"*



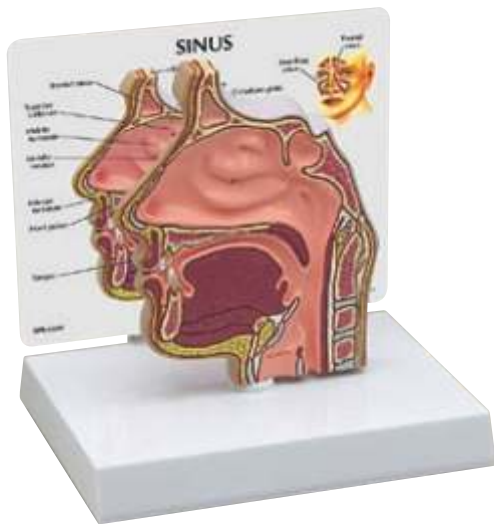
**#2851 CLEAR SINUS**

Life size model demonstrating sinus cavities in the head. Clear face shell allows for orientation of the sinus cavities: sphenoid, frontal, ethmoid, maxillary, and mastoid.

Model size: 7" x 5-1/2" x 5"

Card size: 8-1/4" x 6-1/4"

No Base



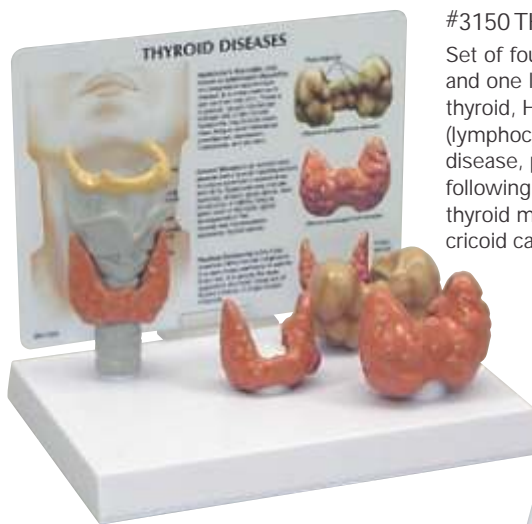
**#2850 SINUS**

Full size cut-away normal model depicts a near median section through the nose and nasal passages. Details include nasal cavity, soft and hard palate, uvula, eustachian tube and pharyngeal tonsil. Reverse side shows ethmoid and maxillary sinus cavities.

Model size: 4-1/2" x 5/8" x 5-1/4"

Card size: 6-1/2" x 5-1/4"

Base size: 6-1/2" x 5"



**#3150 THYROID**

Set of four average size thyroids and one larynx. Models show normal thyroid, Hashimoto's thyroiditis (lymphocytic thyroiditis), Graves' disease, papillary carcinoma and the following structures: hyoid bone, thyroid membrane, thyroid cartilage, cricoid cartilage, and trachea.

Model sizes:

2" x 1-1/4" x 2",

3" x 1-1/2" x 2",

2-3/4" x 1-1/2" x 2-1/4"

Larynx 5-1/2" x 2" x 3-1/2"

Card size: 8-1/4" x 6-1/4"

Base size: 8-7/8" x 6-1/4"



**#2950 HALF BRAIN SENSORY/MOTOR**

Normal right half brain features: frontal, parietal, occipital and temporal lobes, cerebellum, interthalamic adhesion, corpus callosum, pons, midbrain-central peduncle, olfactory bulb, optic nerve, optic chiasm, mammillary body and medulla oblongata.

Model size: 6-1/2" x 5" x 2-1/2"

Card size: 6-1/2" x 5-1/4"

Base size: 6-1/2" x 5"



**#2900 BRAIN**

Full size segmented brain features half normal side and three-piece sectioned pathology half, as well as Circle of Willis with aneurysm. The brain, which sits inside a partial skull, features the following pathologies which are also illustrated on a two-sided education card: alcoholism, Alzheimer's, aneurysm, depression related tumor, seizure related tumor, migraine, multiple sclerosis, Parkinson's disease, stroke, and subdural hematoma.

Brain size: 5" x 6-3/4" x 5"

Card size: 8-1/4" x 6-1/4"

No Base

**NEW!**

**#2861 CLEAR HUMAN JAW WITH TEETH**

Full size hinged clear cast jaw to allow viewing of roots. Healthy side shows normal dentition and occlusion. Affected side shows multiple pathologies, including: super eruption, apical alveolar abscess with caries, periodontal disease, lateral abscess, abfraction, irregular root curvature, impacted canine, erosion, fractured tooth, horizontal impact, radicular pulpitis, root canal with crown, internal resorption, attrition, external resorption of root, implants, and fractured root.

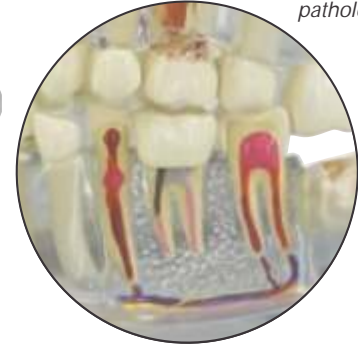
Model size: 2-4/5" x 2-1/2" x 2-1/2"

Card size: 6-1/2" x 5-1/4"

No Base



Details showing dental pathologies



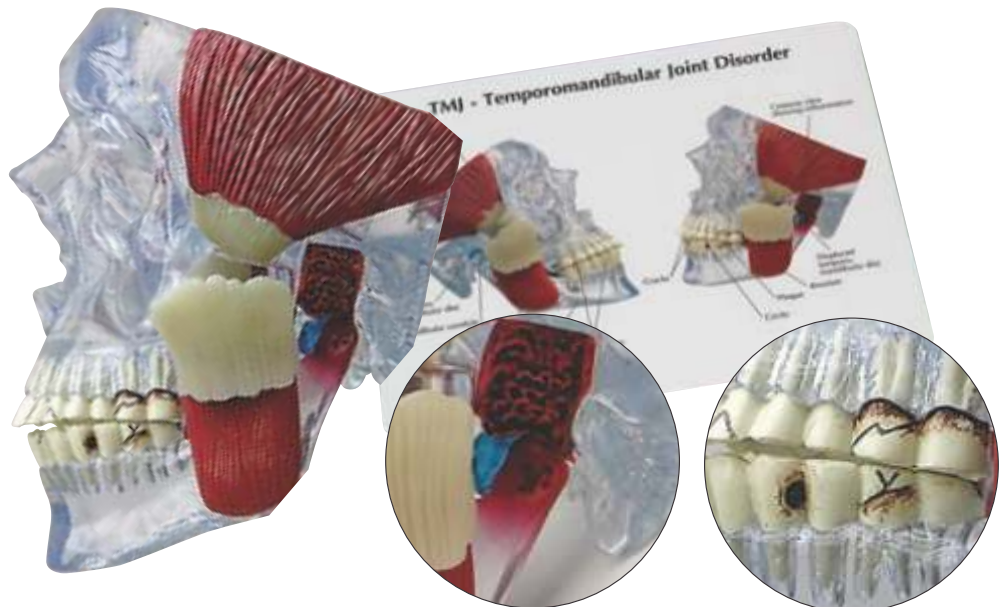
**#2880 TMJ**

Temporomandibular Joint (TMJ) model, demonstrating the problematic conditions associated with the joint capsule. Emphasis on the disc, surrounding bone inflammation, and also the effects on the teeth, (cracks, chips, cavities, and characteristics of bruxism).

Model size: 6" x 6" x 6-1/2"

Card size: 8-1/4" x 6-1/4"

No Base

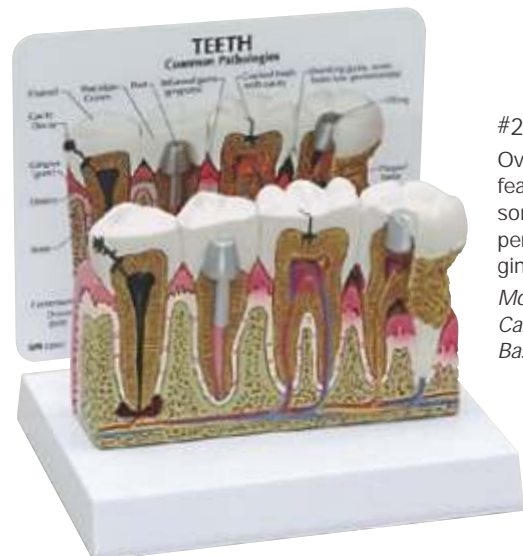


Cut-away showing bone inflammation



Detail showing TMJ effects on teeth

**TOP SELLER**



**#2860 TEETH**

Oversized model of premolars and molars featuring many common dental problems, some of which are: abscess, advanced periodontitis, cavity, crown, decay, filling, gingivitis, plaque, and severe bone loss.

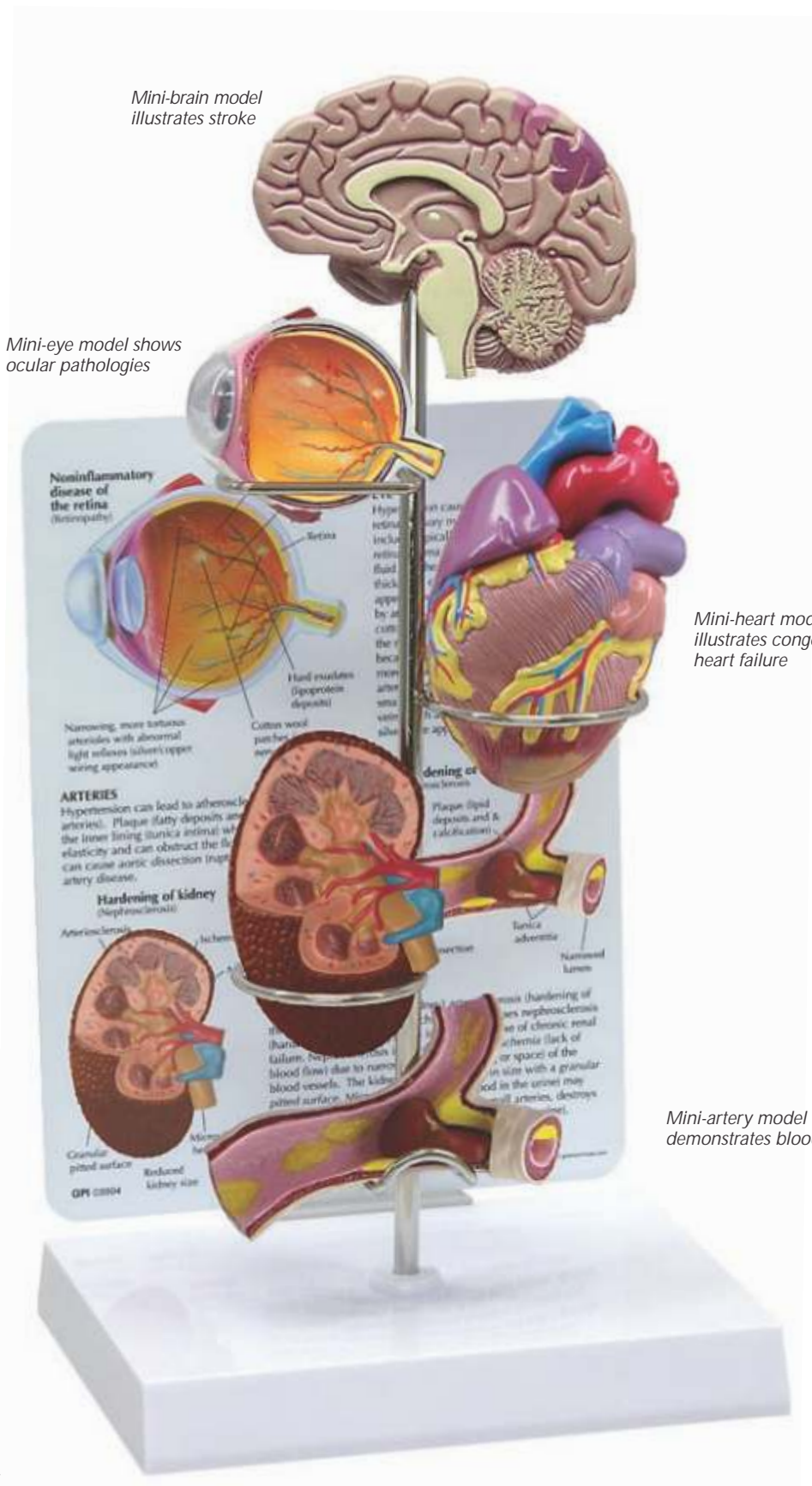
Model size: 5-1/2" x 2" x 3-1/2"

Card size: 6-1/2" x 5-1/4"

Base size: 6-1/2" x 5"



Reverse side of model showing normal and diseased gum states



Mini-brain model illustrates stroke

Mini-eye model shows ocular pathologies

Mini-heart model illustrates congestive heart failure

Mini-kidney model demonstrates the qualities of nephrosclerosis (when a kidney becomes hardened and reduced in size)

Mini-artery model demonstrates blood clotting

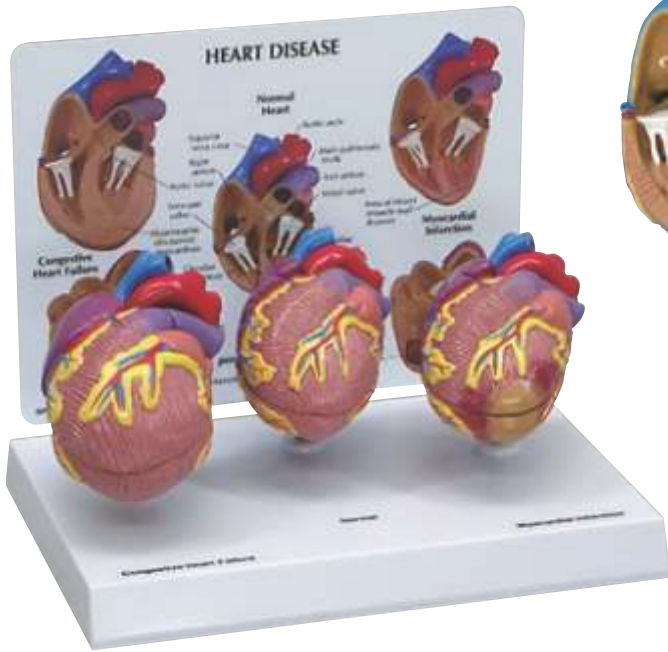
#4000 HYPERTENSION SET

Miniature brain, eye, heart, kidney and artery models. Education card illustrates effects associated with hypertension: ocular pathologies, arteriosclerosis, arterial plaque, kidney failure and stroke.

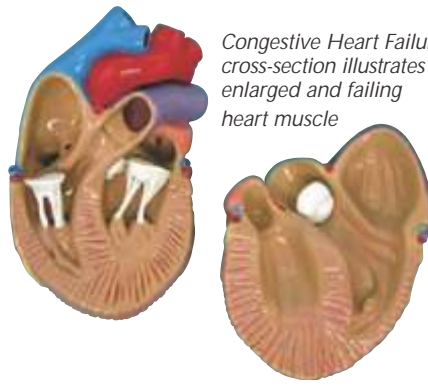
Model display stands 12" tall. Models are reduced size

Card size: 6-1/4" x 8-1/4"

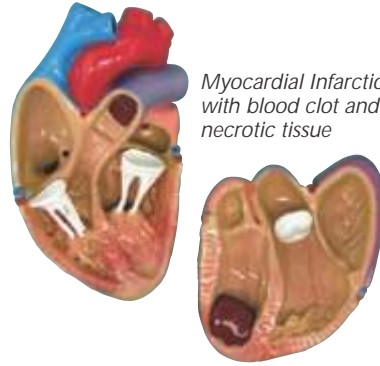
Base size: 6-1/2" x 5"



*Congestive Heart Failure cross-section illustrates enlarged and failing heart muscle*

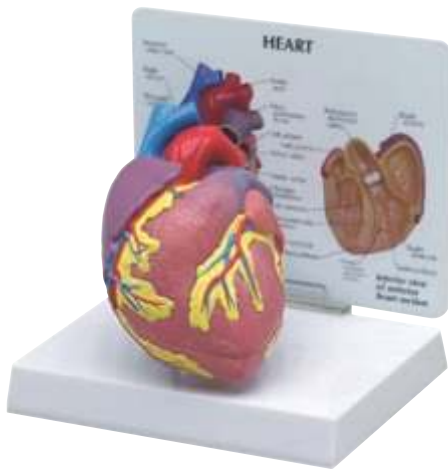


*Myocardial Infarction with blood clot and necrotic tissue*



**#2550 3-MINI HEART SET**  
 Three mini heart models showing healthy heart, myocardial infarction and congestive heart failure. Myocardial infarction heart demonstrates a partially healed, thinned, and discolored infarcted area including a thrombus in the apex of the heart. Congestive heart failure heart as a result of hypertension shows ventricular hypertrophy and the correspondingly enlarged and distorted shape of the heart both internally and externally. All models are approximately 50% actual size.

*Model sizes:  
 Normal & MI 4" x 2-1/4" x 1-3/4"  
 CHF 4" x 2-1/2" x 2-1/4"  
 Card size: 8-1/4" x 6-1/4" "  
 Base size: 8-7/8" x 6-1/4"*



**TOP SELLER**

**#2500 HEART**  
 Full size two-piece normal model opens in half to show inner chambers and valves of the heart, as well as aortic arch, superior and inferior vena cava, pulmonary and cardiac veins.  
*Model size: 3-3/4" x 4" x 4-1/4"  
 Card size: 6-1/2" x 5-1/4"  
 Base size: 6-1/2" x 5"*



**#2600 ARTERY**  
 Oversized "Y" section of artery with cut-away, showing gradual build-up of cholesterol deposits.  
*Model size: 6-1/4" x 2" x 4"  
 Card size: 6-1/2" x 5-1/4"  
 Base size: 6-1/2" x 5"*



*Model does not disassemble from handle*

**#2650 4-PIECE ARTERY**  
 Four-stage cross-section of an artery demonstrating progressive atherosclerosis in which the narrowing of the artery is due to a build up of fatty tissue (cholesterol) and plaque shown in. Shown in four stages: normal artery, fatty streak, fibrous plaque, and blockage. The stages cause a decrease in blood flow, which can lead to a blood clot or thrombus. All stages rotate on hinge pin.  
*Full model size without handle: 3-3/8" x 1-1/4" x 1-7/8"  
 Handle size: 4-1/4" x 1-3/4"  
 Card size: 6-1/2" x 5-1/4"  
 Several custom display options are available*



**#2010 GASTROESOPHAGEAL REFLUX DISEASE (GERD)**

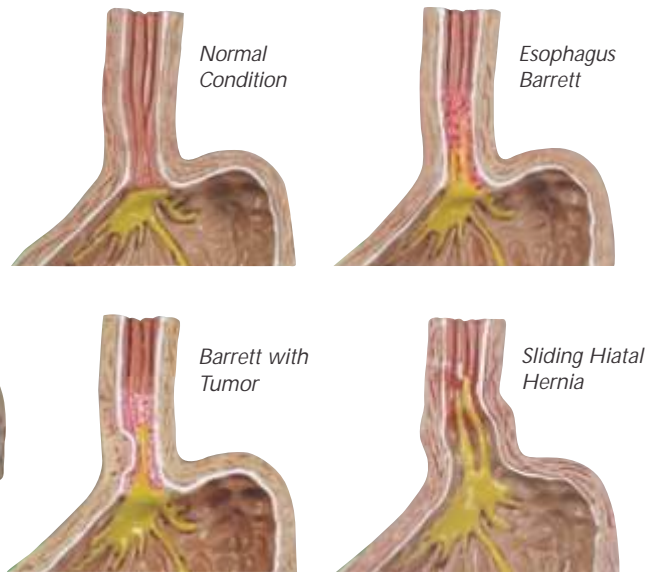
Four-piece model of progressive stages of GERD. Conditions include: normal, sliding hiatal hernia and acid reflux; chronic acid reflux/ Barrett's esophagus; Barrett's esophagus/adenocarcinoma.

Full model size without handle: 4-1/2" x 3" x 3"

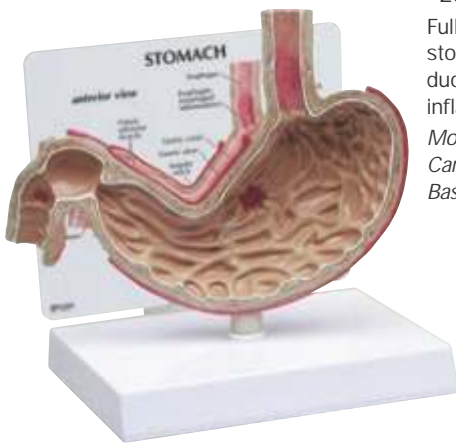
Handle size: 4-3/4" x 1-7/8"

Card size: 6-1/2" x 5-1/4"

No Base



Model does not disassemble from handle



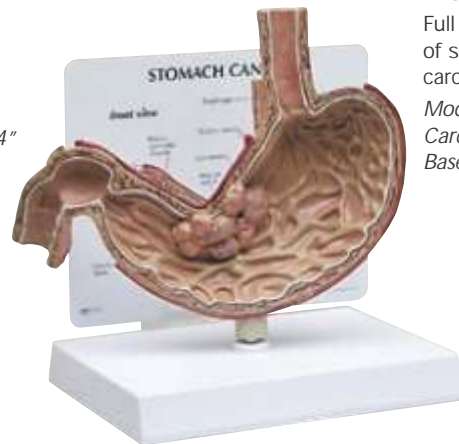
**#2000 STOMACH with ulcers**

Full size cut-away section of stomach shows gastric ulcer, duodenal ulcer and esophageal inflammation.

Model size: 7-3/4" x 1-1/4" x 6-1/4"

Card size: 6-1/2" x 5-1/4"

Base size: 6-1/2" x 5"



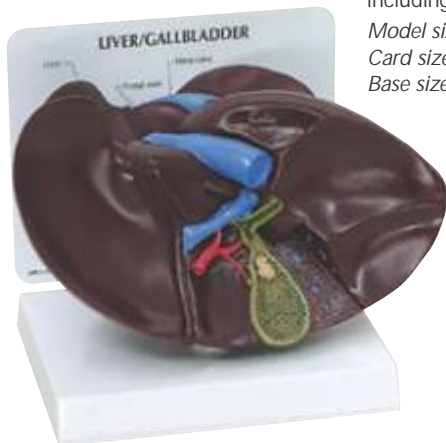
**#2001 STOMACH CANCER**

Full size cut-away section of stomach showing a carcinoma tumor.

Model size: 7-3/4" x 1-1/4" x 6-1/4"

Card size: 6-1/2" x 5-1/4"

Base size: 6-1/2" x 5"



**#3300 LIVER/GALLBLADDER**

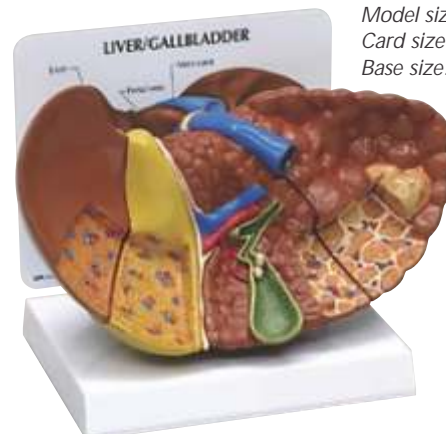
with gallstones

Full size liver and gallbladder with cut-away section showing inner anatomy of gallbladder, including gallstones.

Model size: 8" x 4-1/2" x 5-1/2"

Card size: 6-1/2" x 5-1/4"

Base size: 6-1/2" x 5"



**#3310 LIVER with pathologies**

Full size liver model with the following common pathologies: cirrhosis (septal and nodular), biliary obstruction, gallstones and tumors.

Model size: 8" x 4-1/2" x 5-1/2"

Card size: 6-1/2" x 5-1/4"

Base size: 6-1/2" x 5"



### #3341 4-PIECE COLON with pathologies

Four-piece cross-section of the human colon demonstrating both normal and various disease conditions. Structures included in the normal anatomy include: serosa, muscle, mucosa, semilunar folds, taenia, coli, and epiploic appendices. Diseases represented are: polyps, cancer, diverticulitis, and colitis.

Model size: 3-5/8" x 1-1/2" x 1-7/8"

Handle size: 4-3/4" x 1-7/8"

Card size: 6-1/2" x 5-1/4"

Several custom display options are available



Model does not disassemble from handle



## TOP SELLER

### #3340 COLON

Cut-away view model with the following common pathologies: adhesions, appendicitis, bacterial infection, cancer, Crohn's disease, diverticulitis, diverticulosis, polyps, spastic colon, and ulcerative colitis.

Model size: 6" x 2-1/2" x 7-3/4"

Card size: 6-1/4" x 8-1/4"

Base size: 6-1/2" x 5"



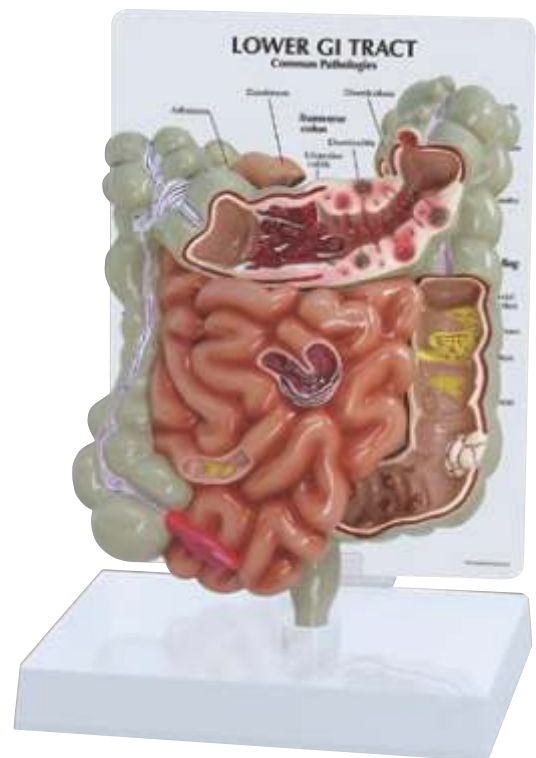
### #3350 RECTUM

One and one half times life size cut-away model displaying ulcerative colitis, internal and external fistula, internal and external hemorrhoids, annular cancer, sessile polyp, submucosal abscess, skin tag, pedunculated polyp, supralelevator abscess, ischiorectal abscess, cryptitis, diverticulum, condyloma acuminatum, fissure and condyloma latum.

Model size: 5-1/2" x 2-1/2" x 7"

Card size: 6-1/2" x 5-1/4"

Base size: 6-1/2" x 5"



### #3342 GI TRACT

Cut-away view model of the small and large intestine with the following common pathologies: adhesions, appendicitis, bacterial infections, cancer, Crohn's disease, diverticulitis, polyps, spastic colon, and ulcerative colitis.

Model size: 6" x 2-1/2" x 7-3/4"

Card size: 6-1/4" x 8-1/4"

Model display stands 13-1/2" tall

Base size: 6-1/2" x 5"

#3600 OBESITY

Pear and Apple shaped bodies in two cross-sections (one left, one right) of the hip area. The Pear shape is referred to as: "Pear body fat distribution pattern" or "lower body fat". This is mainly composed of subcutaneous fat. The Apple shape is referred to as: "Apple body fat distribution pattern" or "intra-abdominal fat". Intra-abdominal fat can be composed of visceral and subcutaneous fat. Illustrating effects from obesity such as compression from visceral fat on the colon, common iliac artery and veins, ureter, small intestine, femoral nerve, etc. The education card depicts an Apple, Pear, and a normal section of the same areas with callouts.

Pear model size: 4-1/8" x 5-3/8" x 3-1/2"

Apple model size: 3-3/4" x 5-3/4" x 3-1/2"

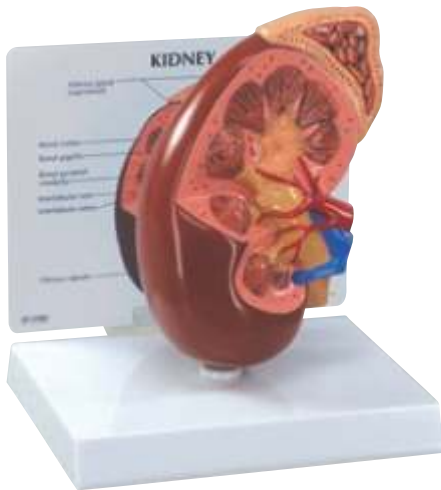
Card size: (2) - 6-1/4" x 8-1/4"

Base size: 10-1/2" x 6-1/2"



PEAR

APPLE



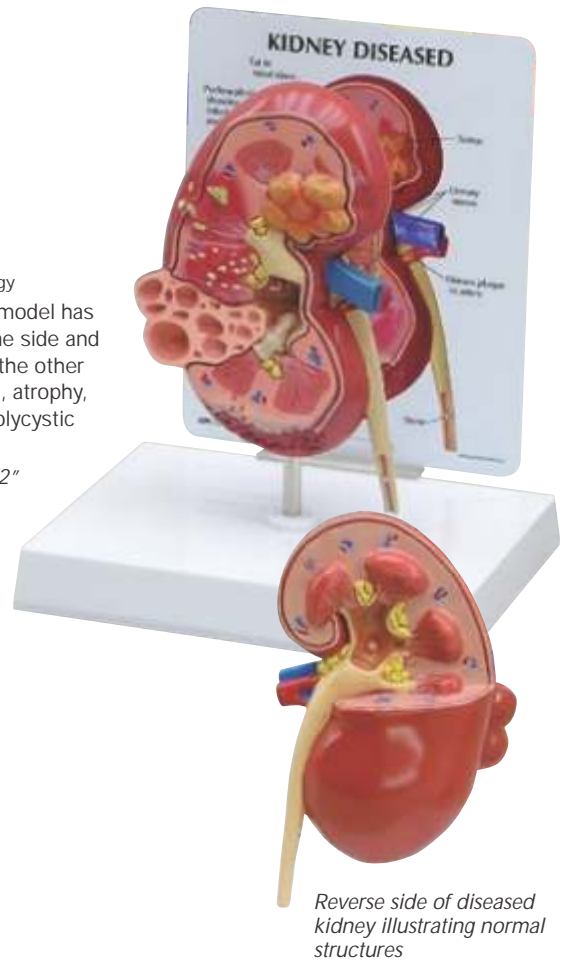
#3250 KIDNEY normal

Oversized longitudinal section of right kidney and adrenal gland. Model highlights renal artery and vein, major and minor calyx, interlobular artery and vein, and ureter.

Model size: 3-3/4" x 2-1/2" x 6-1/2"

Card size: 6-1/2" x 5-1/4"

Base size: 6-1/2" x 5"



#3260 KIDNEY normal / pathology

This oversized two-sided kidney model has a normal anatomy cutaway on one side and a diseased anatomy cutaway on the other side depicting: infection, scarring, atrophy, urinary (kidney) stones, tumor, polycystic disease, hypertension effects.

Model size: 3-3/4" x 2-1/2" x 6-1/2"

Card size: 5-1/4" x 6-1/2"

Base size: 6-1/2" x 5"

Reverse side of diseased kidney illustrating normal structures



#3330 PANCREAS

Full size model shows pancreatic cancer, the gallbladder with stones, a ruptured spleen and duodenal ulcer.

Model size: 7-3/4" x 2-1/2" x 5-3/4"

Card size: 6-1/2" x 5-1/4"

Base size: 6-1/2" x 5"

**NEW!**

**#4020 METABOLIC SYNDROME**

Miniature brain, heart, kidney, liver, artery, pancreas. Education card illustrates effects associated with Metabolic Syndrome : stroke, congestive heart failure, coronary artery disease, angina, myocardial infarction, non-alcoholic fatty liver disease, atherosclerosis, renal arteriosclerosis, nephrosclerosis. Model display stands 13.5" tall. Models are reduced size.

Model size: 4: 1/2" x 2 1/10" x 4"

Card size: 6-1/4" x 8-1/4"

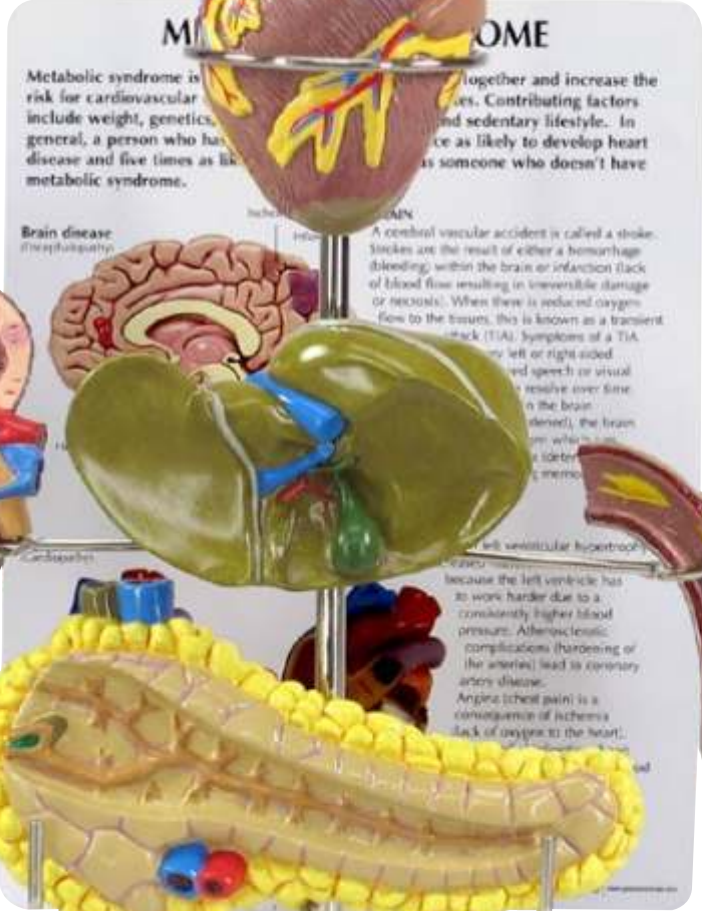
Base size: 8-7/8" x 6-1/4"



Mini-brain model illustrates stroke



Mini-heart model illustrates congestive heart failure



Mini Non-alcoholic fatty liver

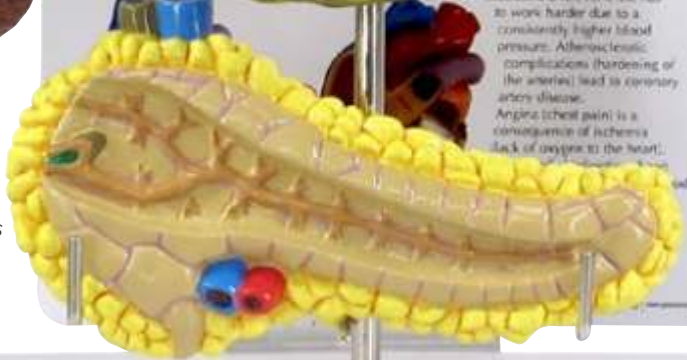
Mini-kidney model demonstrates the qualities of nephrosclerosis (when a kidney becomes hardened and reduced in size)



Mini-artery model demonstrates blood clotting



Mini-pancreas model shows ocular pathologies



**#4011 4-PIECE DIABETES**

Four piece model indicating structures and organs with vascular effects due to diabetes. Includes sectioned model of Bowman's capsule (kidney), artery, nerve, eye (posterior section).

Full model size without handle:

3-1/2" x 2" x 2-1/8"

Handle size: 4-1/4" x 1-3/4"

Card size: 6-1/2" x 5-1/4"

Several custom display options are available



Model does not disassemble from handle

**#4010 TYPE 2 DIABETES SET**

Miniature brain, eye, heart, kidney, artery, pancreas, neuron, and foot models. Education card illustrates effects associated with Type 2 Diabetes: stroke, ocular pathology, hypertensive heart disease, hardening of the kidney, hardening of the arteries, insulin resistance, neuropathy, and foot ulcerations.

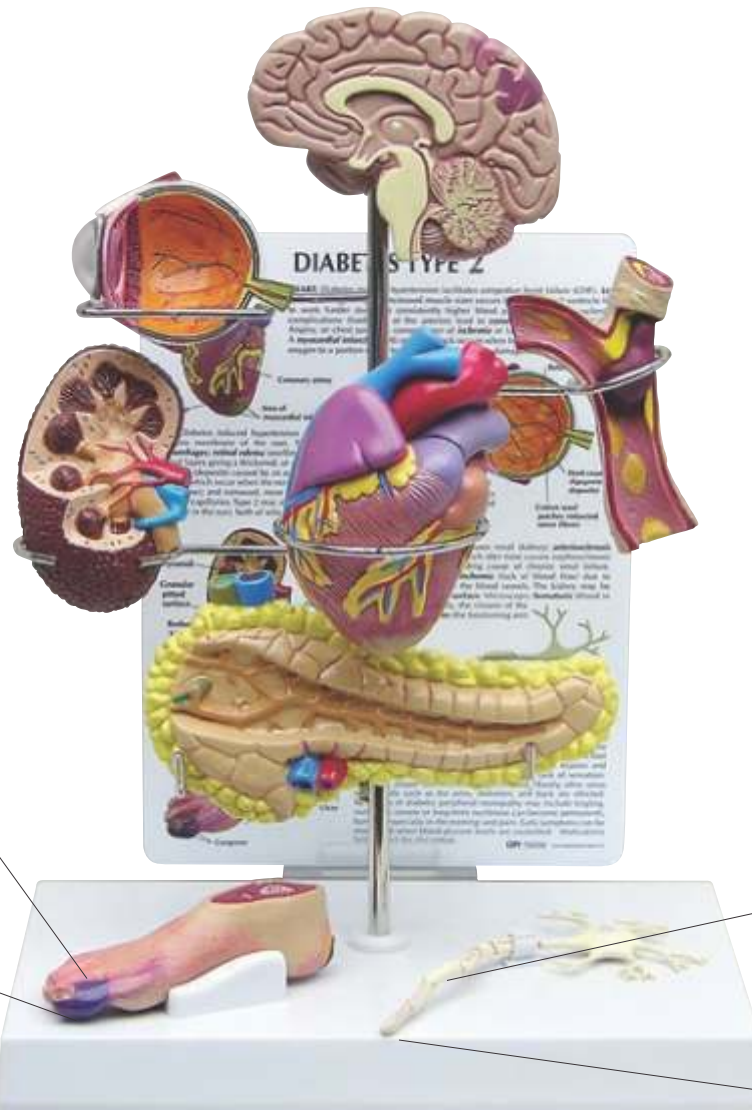
Model display stands 11" tall.

Models are reduced size.

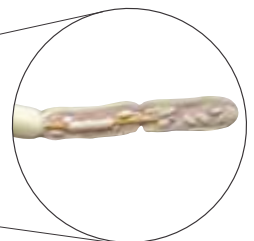
Model size: 4: 1/2" x 2 1/10" x 4"

Card size: 6-1/4" x 8-1/4"

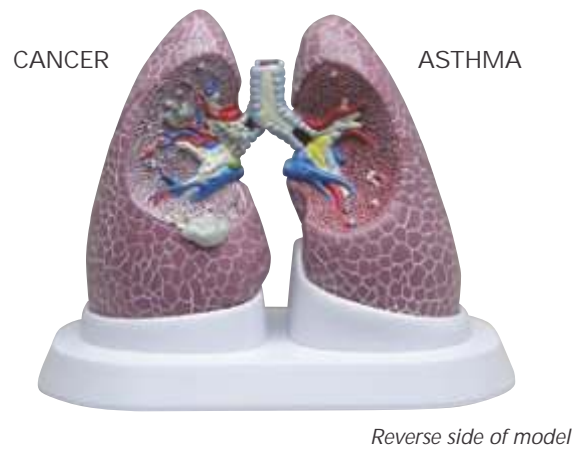
Base size: 8-7/8" x 6-1/4"



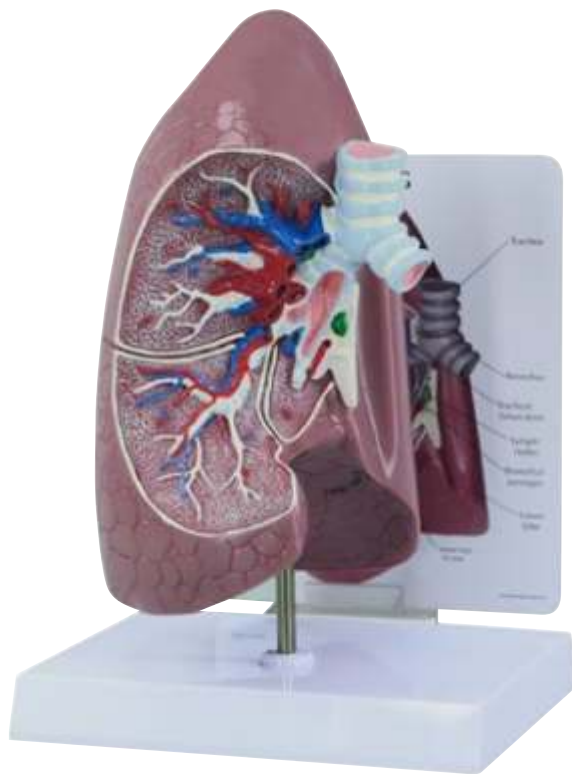
Detail view of foot affected by gangrene



Cross-section of demyelinated axon



**#3110 LUNG SET** with pathologies  
 Set of two separate full-size, two-sided lung models with cutaway sections illustrating normal anatomy and the effects of COPD (Chronic Obstructive Pulmonary Disease), cancer and asthma on the opposite side.  
*Model size: 4-1/4" x 5-1/2" x 8-1/4" each*  
*Card size: 8-1/4" x 6-1/4"*  
*Base size: 10-1/2" x 6-1/2"*



**#3100 LUNG**  
 Full size normal cut-away of right lung shows bronchus, arteries, vein, two lymph nodes, bronchial passages and trachea bifurcation.  
*Model size: 4-1/4" x 5-1/2" x 8-1/4"*  
*Card size: 6-1/2" x 5-1/4"*  
*Base size: 6-1/2" x 5"*



**#3120 4-PIECE BRONCHUS**  
 Four stage cross-section of the bronchus demonstrating the tissue changes occurring in asthma and chronic bronchitis. Four stages: normal bronchus, hypersecretion of the mucous gland, swelling with lymphoid aggregations and smooth-muscle spasm. The model includes: cartilage, mucous glands and plug, spiraling smooth muscles, and the fibroelastic connective tissue and epithelial layers of the bronchus. All stages rotate on hinge pin.  
*Full model size without handle: 3-7/8" x 1-1/2" x 1-3/4"*  
*Handle size: 4-3/4" x 1-7/8"*  
*Card size: 6-1/2" x 5-1/4"*  
 Several custom display options are available

**NEW!**

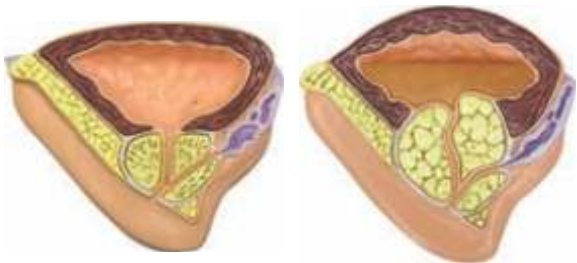
### #3552 MALE PELVIS BPH

Near full size, mid-sagittal section showing the anatomy of the pelvis and prostate. Includes both normal and benign prostatic hyperplasia (BPH) inserts. BPH insert shows increased size of prostate, urethral obstruction, urine retention, and thickening and distention of bladder.

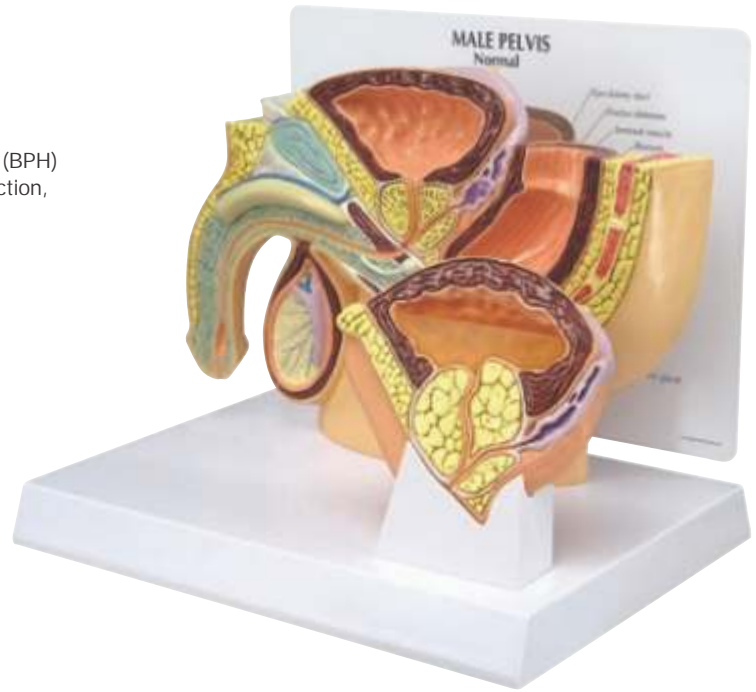
Model size: 9-1/4" x 1-2/5" x 6-1/2"

Card size: 8-1/4" x 6-1/4"

Base size: 8-7/8" x 6-1/4"



Enlarged view of interchangeable healthy and BPH inserts



### #3000 PROSTATE

Complete unit includes six full size prostates. Conditions shown include: normal size prostate; normal size prostate with hard nodule below right lobe surface; prostate with enlarged right lobe; enlarged prostate, symmetrical surface, slight median furrow; enlarged prostate, hard nodule below right base surface; enlarged prostate with hard irregular surface and seminal vesicle involvement.

Base: 8-3/4" x 6-1/4" x 1"

Card size: 8-1/4" x 6-1/4"

Base size: 8-7/8" x 6-1/4"



### #3550 MALE PELVIS WITH PROSTATE

Reduced size, mid-sagittal section showing the anatomy of the pelvis and testis, includes a normal size prostate. The education card shows: normal size prostate, enlarged prostate and benign prostatic hyperplasia.

Model size: 7-1/4" x 1" x 4-3/4"

Card size: 6-1/2" x 5-1/4"

Base size: 6-1/2" x 5"

## IMPROVED

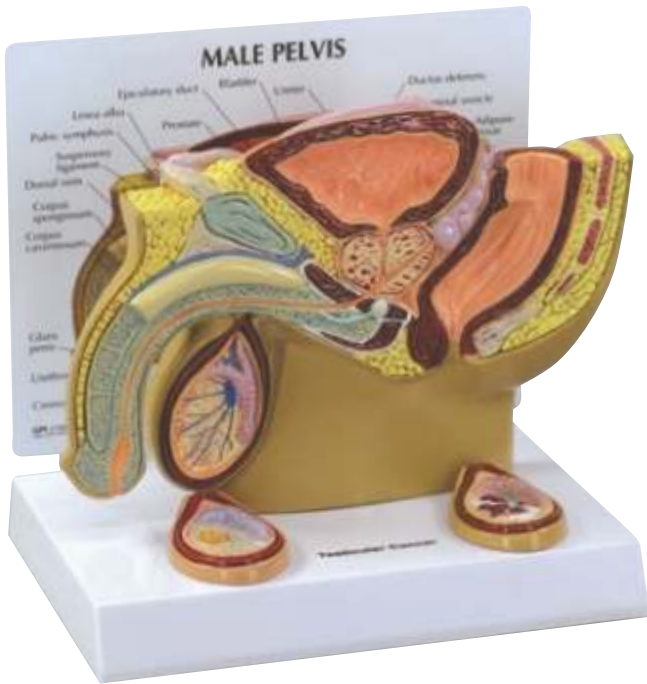
### #3570 MALE PELVIS WITH TESTICLES

Reduced size, mid-sagittal section male pelvis, shows anatomy of the pelvis and testis. Testicles showing the two most common tumors, teratocarcinoma and newly added seminoma testicle. The two-sided education card features the male pelvis on one side and three stages of testis tumors on the second side.

Model size: 7-1/4" x 1" x 4-3/4"

Card size: 6-1/2" x 5-1/4"

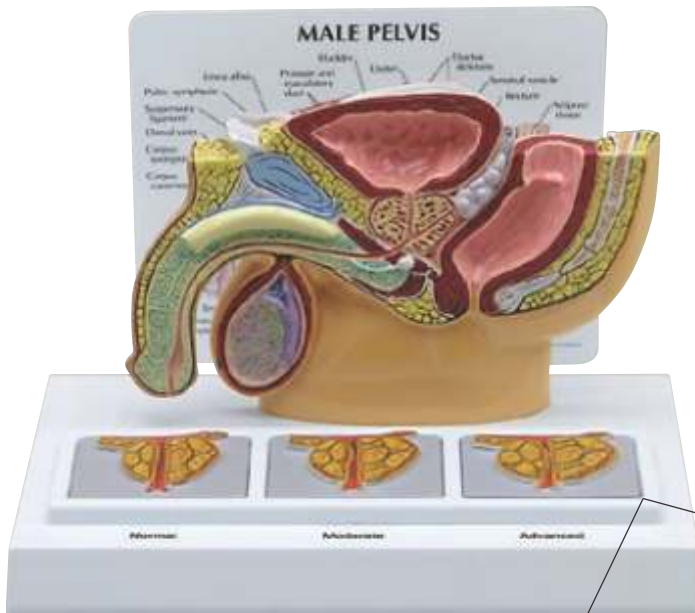
Base size: 6-1/2" x 5"



Teratocarcinoma testicle detail



Seminoma testicle detail



### #3551 MALE PELVIS WITH 3D PROSTATE FRAME

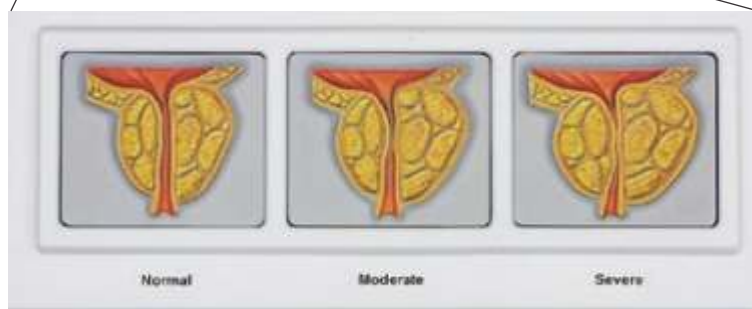
Reduced size, mid sagittal section of the male pelvis. Base displays three 3-dimensional cross-sections of the prostate gland. Sections represent stages (normal, moderate, advanced) of BPH (Benign Prostatic Hyperplasia/ Enlarged Prostate).

Model size: 7-1/4" x 1" x 4-3/4"

Card size: 6-1/2" x 5-1/4"

Panel size: 8" x 2-1/2" x 1/4"

Base size: 8-7/8" x 6-1/4"



Frame detail



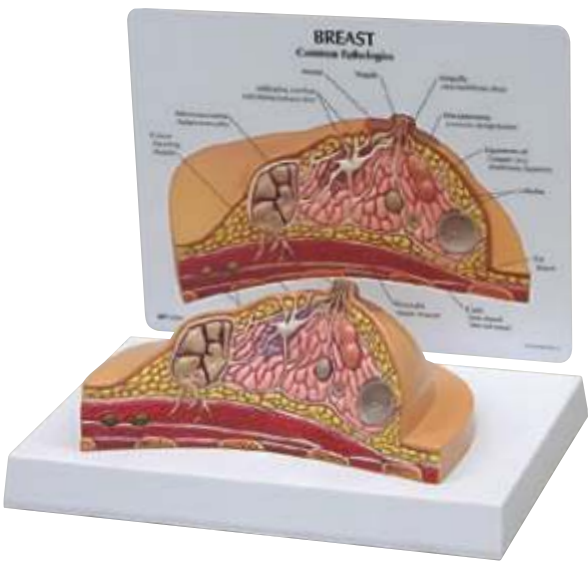


**NEW!**

**#3401 LEFT BREAST WITH IRREGULAR MASSES**  
 Full size model is made of durable lifelike material with embedded lumps that simulate fibrocystic mass and typical tumor. Model also contains a lactiferous duct. Back side of education card shows locations of irregular masses. Base art shows common self-inspection patterns.  
*Model size: 8-3/4" x 6-1/4" x 3"*  
*Card size: 8-1/4" x 6-1/4"*  
*Base size: 8-7/8" x 6-1/4"*



Revers side of the educational card

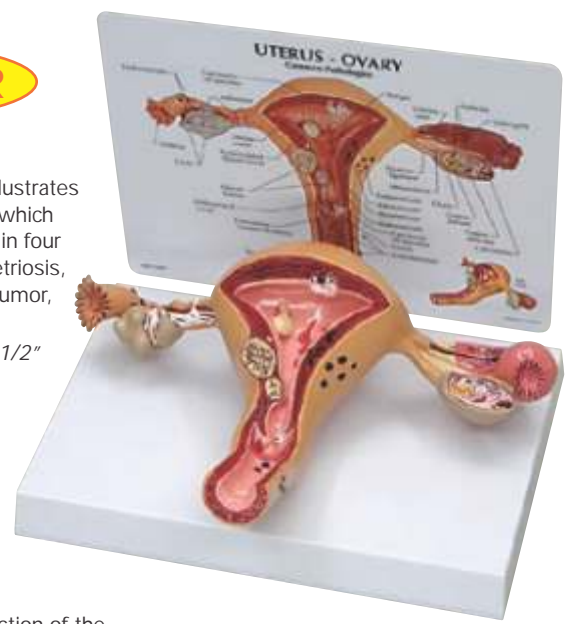


**#3450 BREAST CROSS-SECTION**  
 Full size cross-section model depicts common pathologies such as adenocarcinoma, cysts, fibroadenoma, and infiltrating scirrhous carcinoma. Model also shows breast structures such as suspensory ligaments, fat tissue, lymph nodes, muscles, and ribs.  
*Model size: 6-1/2" x 4-1/2" x 3"*  
*Card size: 8-1/4" x 6-1/4"*  
*Base size: 8-7/8" x 6-1/4"*

**TOP SELLER**



**#3480 UTERUS-OVARY**  
 Full size cross-section model illustrates multiple pathologies, some of which include: adhesions, carcinoma in four common areas, cysts, endometriosis, fibroids, pedunculated fibroid tumor, polyps and salpingitis.  
*Model size: 8-3/4" x 6-1/4" x 2-1/2"*  
*Card size: 8-1/4" x 6-1/4"*  
*Base size: 8-7/8" x 6-1/4"*



**#3500 FEMALE PELVIS**  
 Reduced size, mid-sagittal cross-section of the pelvis showing female anatomy, including the ovary and fallopian tube.  
*Model size: 6-1/4" x 2-3/4" x 5-1/2"*  
*Card size: 6-1/2" x 5-1/4"*  
*Base size: 6-1/2" x 5"*



**#3851 PRECANCEROUS AND CANCEROUS SKIN LESIONS – HINGED DISK SET**

Model presents full size and enlarged views of dysplastic nevus, actinic keratosis, malignant melanoma, squamous cell carcinoma, and basal cell carcinoma skin lesions. Each disk has a 3-dimensional surface to help demonstrate the skin condition. Back side of disk presents additional lesion information. No education card.

Model size: 4" diameter x 1-5/8"



*Exploded view of all pathologies.  
Disks not removable from casing*



**#3750 SKIN ACNE**

Enlarged cylindrical cross-section of skin with relief detail displaying three conditions: acne pustule (pimple), closed comedo (whitehead), and open comedo (blackhead) on backside. Also shown is a normal section of skin with the epidermis, dermis and subcutaneous tissue, including the hair follicle.

Model size: 4-1/4" diameter x 5"

Card size: 6-1/2" x 5-1/4"

Base size: 6-1/2" x 5"



**#3850 SKIN CANCER**

Enlarged cross-section model features three cancerous conditions: NBC (nodular basal cell), MM (malignant melanoma), MBC (morpheic basal cell) and three non-cancerous conditions: DN (dysplastic nevi), KA (keratoacanthoma), AK (actinic keratosis) with basal layer and dermal layer cross-section detail.

Model size: 4" diameter x 1-1/4"

Card size: 6-1/2" x 5-1/4"

Base size: 6-1/2" x 5"



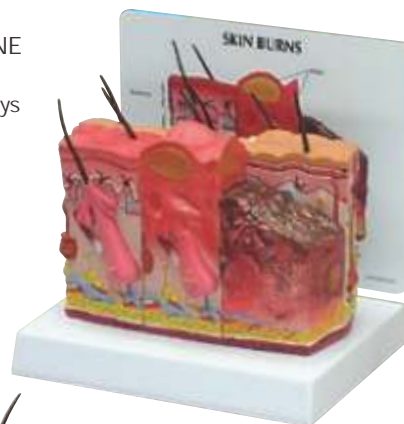
**#3751 SKIN NORMAL/ACNE**

Enlarged two-sided skin cross-section. The "acne" side displays three conditions: whitehead, blackhead and pustule/cyst. The reverse side illustrates normal skin anatomy.

Model size: 6" x 2-1/4" x 4"

Card size: 6-1/2" x 5-1/4"

Base size: 6-1/2" x 5"



**#3800 SKIN NORMAL/BURN**

Enlarged two-sided skin cross-section. The burn side of the model shows indication of first, second and third degree burns. The reverse side illustrates normal skin anatomy.

Model size: 6" x 2-1/4" x 4"

Card size: 6-1/2" x 5-1/4"

Base size: 6-1/2" x 5"



*Normal side common to both two-sided Skin Models*

**NEW!**

### #1800 4-STAGE OSTEOARTHRITIS (OA) SHOULDER

Set of four shoulder models, reduced size, illustrating degenerative joint disease (osteoarthritis) of glenohumeral joint: erosion to joint articular cartilage, progression of degenerative disease, osteophyte (bone spur) formation at the articular surfaces, and humeral head flattening. Normal stage includes a full scapula. Advanced stage shows acromioclavicular joint osteoarthritis and ligaments.

Model size: 4: 1/2" x 2 1/10" x 4"

Card size: 8-1/4" x 6-1/4"

Base size: 10-5/8" x 6-1/4"



Detachable scapula revealing effects of advanced stage osteoarthritis



### #1100 4-STAGE OSTEOARTHRITIC KNEE

Set of four knee models, reduced size, illustrating: degenerative joint disease (osteoarthritis), erosion to joint articular cartilage, progression of degenerative joint disease, osteophytes (bone spurs) at the articular surfaces. Advanced stage knee is articulating for additional view of joint.

Model size: 3" x 1-3/4" x 5-1/2"

Card size: 8-1/4" x 6-1/4"

Base size: 10-5/8" x 6-1/4"

### #1320 4-STAGE DEGENERATIVE BONE DISEASES OF THE HIP

Set of four hip models, reduced size, illustrating: degenerative joint diseases (osteoarthritis and osteoporosis) and fractures, erosion to joint articular cartilage, progression of degenerative joint disease, osteophytes (bone spurs) at the articular surfaces.

Model size: (4 each) 3-1/2" x 5" x 4"

Card size: 8-1/4" x 6-1/4"

Base size: 10-5/8" x 6-1/4"



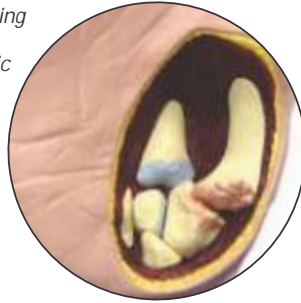
Detachable scapula revealing effects of advanced stage osteoarthritis



Detail showing normal and osteoarthritic joints



Detail showing cutaway of osteoarthritic bone



**NEW!**

**#1930 OSTEOARTHRITIS (OA) HAND**

Full size right hand with cutaway views to reveal effects of osteoarthritis, including: osteophytes (bone spurs), Heberden's nodes Bouchard's nodes, and swan neck deformity of the thumb. Shows other anatomy affected by osteoarthritis: ligaments, tendons, muscle, and cartilage. For comparison, normal anatomy is also shown.

Model size: 5" x 1-4/5" x 7-1/2"

Card size: 6-1/4" x 8-1/4"

Base size: 6-1/2" x 5"

**#1650 4PC OSTEOPOROSIS HINGED DISK SET**

Enlarged cross-sections of bone illustrating the progressive thinning of the trabeculae that occurs due to osteoporosis.

Model size: 4" diameter x 1-5/8"

Card size: 8-1/4" x 6-1/4"



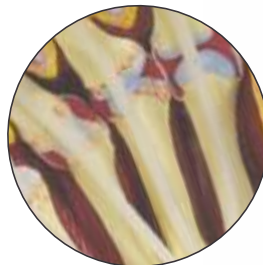
Overhead view looking through Stage 4 disk down to Healthy disk.



Disks are not removable from casing



Detail showing boutonniere and swan neck deformity



Detail showing rheumatoid arthritis progression in MCP joints



**NEW!**

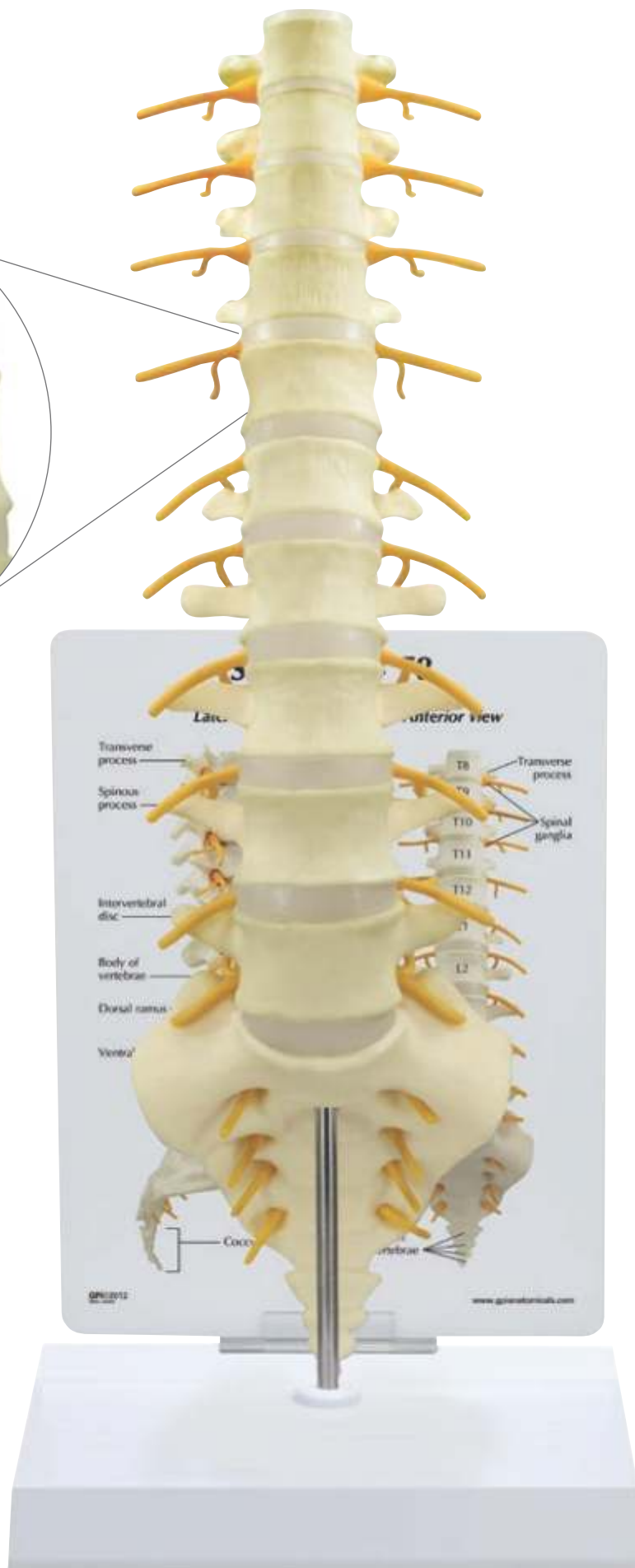
**#1931 RHEUMATOID ARTHRITIS (RA) HAND**

Full size right hand with cutaway views to reveal the effects of rheumatoid arthritis on ligaments, flexor and extensor tendons, muscle, cartilage, bones, synovial membrane, and joint spaces. A cross-section of the metacarpophalangeal joint capsules shows progression of the disease, including synovial swelling, erosion, and degeneration. Swan neck and boutonniere deformities are depicted on the second and third phalanges, respectively. Flexor tendons can be lifted for better viewing of carpals.

Model size: 6" x 3-2/5" x 7-4/5"

Card size: 6-1/4" x 8-1/4"

Base size: 6-1/2" x 5"



**NEW!**

**#1510 SACRUM T8 SPINE**

Full size spine section with spinal cord and nerve branches. Bones featured are the Sacrum, L1 through L5 vertebrae, and T-12 through T-8 vertebrae. This model is highly detailed normal anatomy that is fully articulating.

*Model size: 4-1/2" x 3-1/2" x 16"*

*Card size: 6-1/4" x 8-1/4"*

*Base size: 6-1/2" x 5"*

**TOP SELLER**

**#1760 4-STAGE VERTEBRAE**

Set of four, full size two-piece vertebrae models - one each of the following conditions: normal, "bulging" herniated disc, bone and disc degeneration, and advanced osteoporosis with marked bone compression and bone spurs.

*Each model size: 3-1/2" x 2-3/4" x 3"*

*Card size: 8-1/4" x 6-1/4"*

*Base size: 10-5/8" x 6-1/4"*



**#1500 BASIC VERTEBRAE**

Full size normal L2, L3 and L4 with intervertebral discs and lumbar nerve section. Fully articulating model.

*Model size: 3-1/2" x 3-1/4" x 3-3/4"*

*Card size: 6-1/2" x 5-1/4"*

*Base size: 6-1/2" x 5"*



**#1700 5PC VERTEBRAE**

with sacrum

Full size L1-L5 with sacrum.

Full lumbar nerve with right side

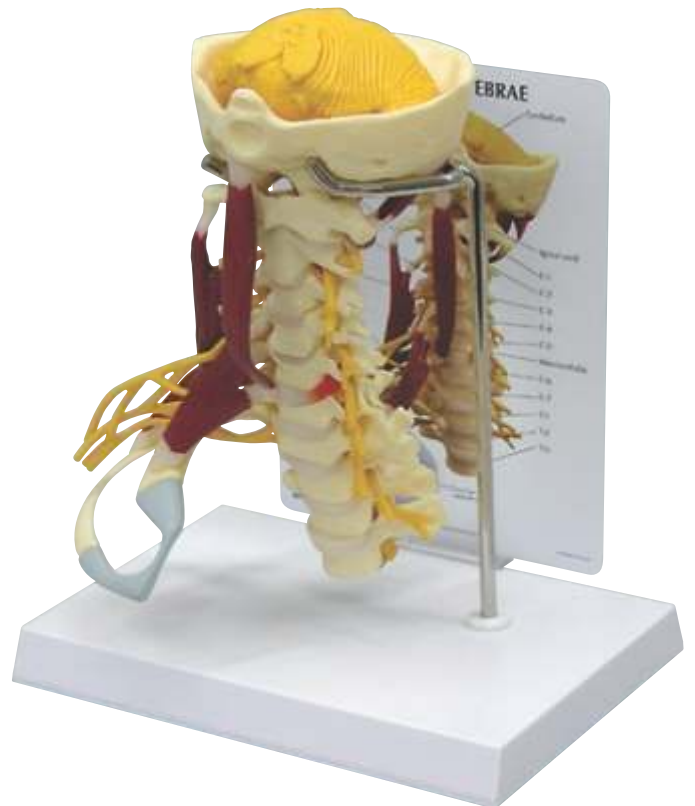
sacral nerve and sciatic branch.

Also includes a herniated disc.

*Model size: 4-1/2" x 3-1/2" x 10-1/2"*

*Card size: 6-1/4" x 8-1/4"*

*Base size: 6-1/2" x 5"*



**#1720 DELUXE MUSCLED CERVICAL**

Full size model features brain stem, occipital bone, atlas and axis through C7 (with herniated disc), T1 and T3. This model has a soft cerebellum and full nerve with right side brachial plexus. Muscles include suboccipital triangle, longus capitis, levator scapulae and scalene muscles. The right first and second ribs are also featured and include cartilage.

*Model size: 5-1/2" x 6-1/2" x 10"*

*Card size: 6-1/4" x 8-1/4"*

*Base size: 8-7/8" x 6-1/4"*

**NEW!**

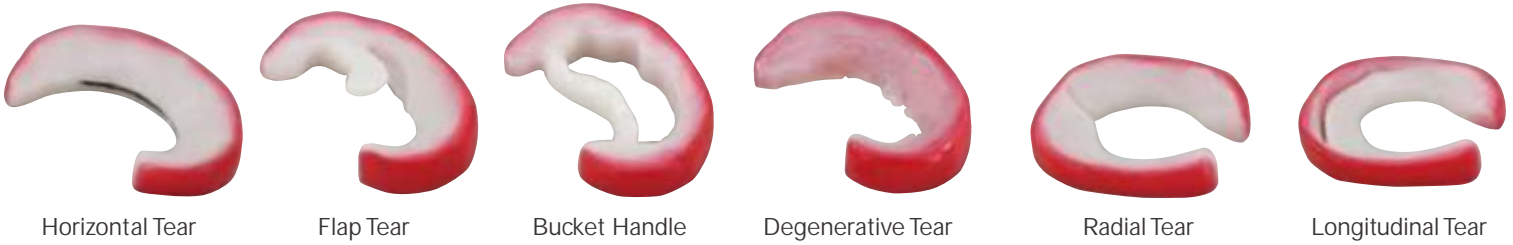
#1010 MENISCUS KNEE

Full size normal right knee demonstrating common meniscus tears. Condition shown includes: horizontal tear, flap tear, bucket handle, degenerative tear, radial tear, longitudinal tear.

Model size: 3-1/2" x 2-3/4" x 6"

Card size: 6-1/4" x 8-1/4"

Base size: 8-7/8" x 6-1/4"



**TOP SELLER**

**#1980 FOOT/ANKLE – PLANTAR FASCIITIS**

Full size solid cast of ankle and foot bones features the plantar calcaneonavicular (spring) ligament with plantar fasciitis. Foot/ankle anatomy also includes: tibia, fibula, calcaneus, calcaneal (Achilles) tendon, deltoid ligament, lateral (collateral) ligament, plantar aponeurosis, cuneiform, phalanges, cuboid, navicular, and metatarsal bones.

Model size: 9" x 2-3/4" x 4"

Card size: 6-1/2" x 5-1/4"

Base size: 6-1/2" x 5"



**TOP SELLER**

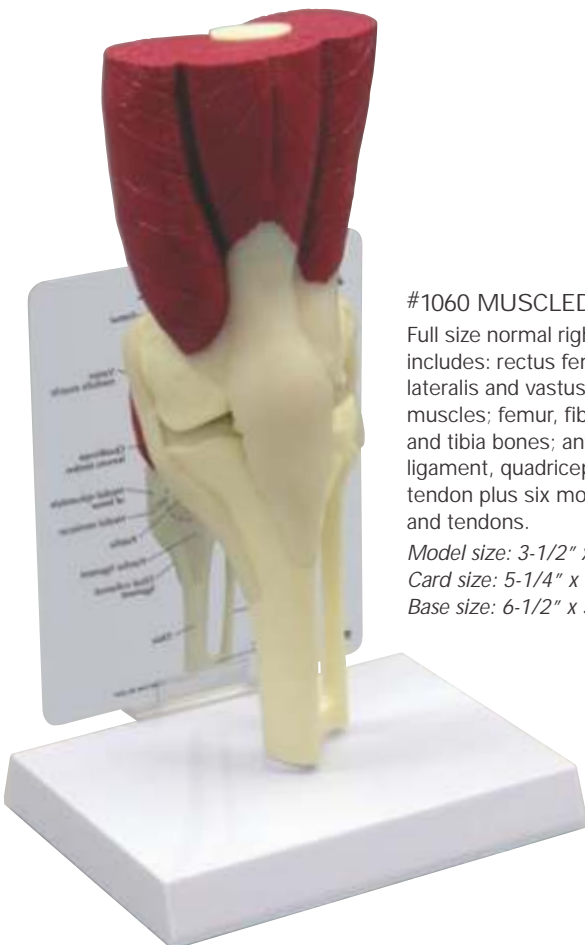
**#1000 BASIC KNEE**

Full size normal right knee includes: femur, fibula, patella and tibia bones; lateral and medial meniscus; quadriceps femoris tendon; anterior cruciate, fibular and tibial collateral, patellar and posterior menisiofemoral ligaments.

Model size: 3-1/2" x 2-3/4" x 6"

Card size: 5-1/4" x 6-1/2"

Base size: 6-1/2" x 5"



**#1060 MUSCLED KNEE**

Full size normal right knee includes: rectus femoris, vastus lateralis and vastus medialis muscles; femur, fibula, patella and tibia bones; anterior cruciate ligament, quadriceps femoris tendon plus six more ligaments and tendons.

Model size: 3-1/2" x 3" x 10"

Card size: 5-1/4" x 6-1/2"

Base size: 6-1/2" x 5"





**#1900 MINI-MUSCLED JOINT SET**

Set of four, reduced size (approximately 50% of stock models), joint models of the hip, elbow, shoulder and knee. See model descriptions for model numbers 1060, 1310, 1810 and 1850 (elbow model does not contain the structures of the hand and wrist).

Card size: 8-1/4" x 6-1/4"  
 Base size: 10-5/8" x 6-1/4"



*Detachable Hip*  
 Model size:  
 2-1/2" x 2-3/4" x 5"



*Detachable Shoulder*  
 Model size:  
 3" x 3" x 3-3/4"



*Detachable Knee*  
 Model size:  
 1-1/2" x 1-3/4" x 4-1/2"



*Detachable Elbow*  
 Model size:  
 1-1/2" x 5-1/4" x 3"

**#1790 BASIC SHOULDER**

Full size normal right shoulder model includes: clavicle, humerus and scapula bones; articular capsule ligament; teres minor tendon; plus eleven additional ligaments and tendons on patient education card.

Model size: 5-1/2" x 6" x 6"  
 Card size: 6-1/2" x 5-1/4"  
 Base size: 6-1/2" x 5"

*Humerus is semi-articulating in capsular ligament for rotator cuff demonstration*



**TOP SELLER**

**#1810 MUSCLED SHOULDER**

Full size normal right shoulder includes: infraspinatus, subscapularis, supraspinatus, and teres major and minor muscles; acromion, clavicle, humerus and scapula bones; plus eight ligaments and tendons.

Model size: 5-1/2" x 6" x 6"  
 Card size: 6-1/2" x 5-1/4"  
 Base size: 6-1/2" x 5"

**NEW!**

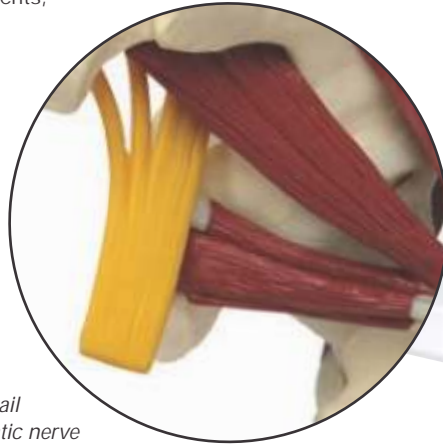
**#1311 MUSCLED HIP WITH SCIATIC NERVE**

Full size normal right hip with proximal femur and lower lumbar vertebrae including: sciatic nerve, gluteus medius, gluteus minimus, iliacus, inferior and superior gemellus, obturator internus, piriformis and psoas muscles, articular capsule ligaments, L4-L5 with sacrum.

Model size: 7-1/2" x 4-3/4" x 10"

Card size: 6-1/4" x 8-1/4"

Base size: 8-7/8" x 6-1/4"



Posterior detail showing sciatic nerve



**#1260 BASIC HIP**

Full size normal right hip with femur includes: articular capsule of the hip joint; greater and lesser trochanter, ilium, ischial spine, ischial tuberosity, ischium and pubis bones.

Model size: 5" x 4-3/4" x 8-1/4"

Card size: 5-1/4" x 6-1/2"

Base size: 6-1/2" x 5"



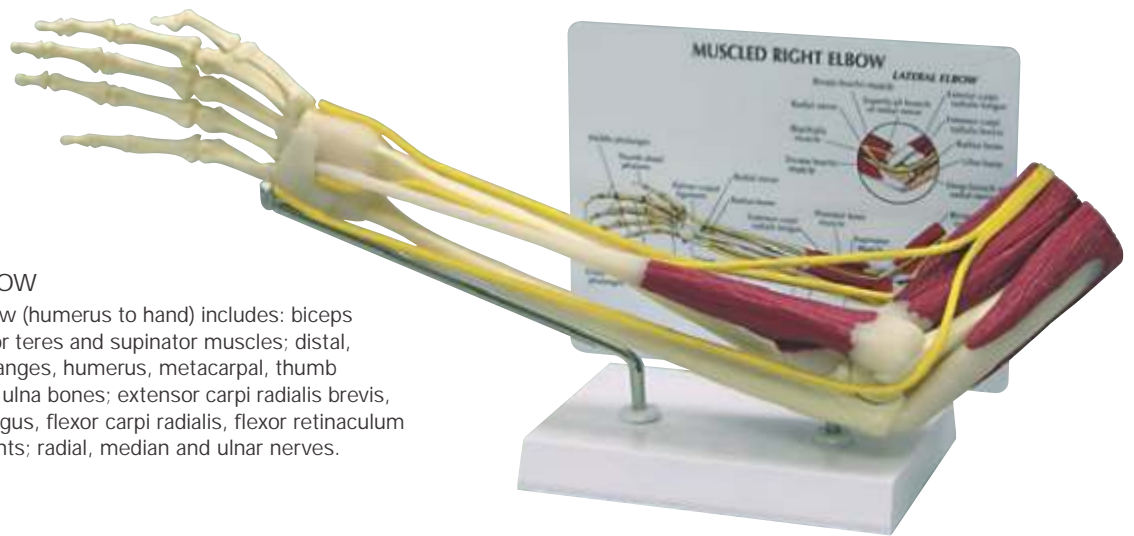
**#1310 MUSCLED HIP**

Full size normal right hip with femur portion includes: gluteus medius, gluteus minimus, iliacus, inferior and superior gemellus, obturator internus, piriformis and psoas muscles plus articular capsule ligaments.

Model size: 5" x 4-3/4" x 8-1/4"

Card size: 5-1/4" x 6-1/2"

Base size: 6-1/2" x 5"



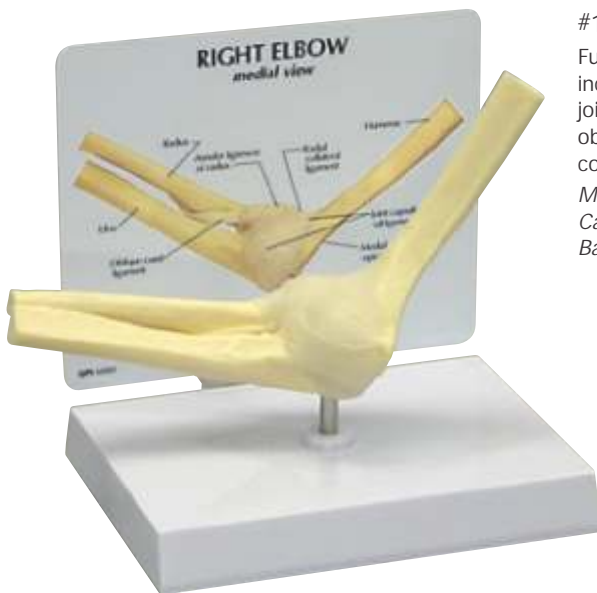
#### #1850 MUSCLED ELBOW

Full size normal right elbow (humerus to hand) includes: biceps brachii, brachialis, pronator teres and supinator muscles; distal, middle and proximal phalanges, humerus, metacarpal, thumb distal phalanx, radius and ulna bones; extensor carpi radialis brevis, extensor carpi radialis longus, flexor carpi radialis, flexor retinaculum and palmar carpal ligaments; radial, median and ulnar nerves.

*Model size: 19" x 3" x 6"*

*Card size: 8-1/4" x 6-1/4"*

*Base size: 6-1/2" x 5"*



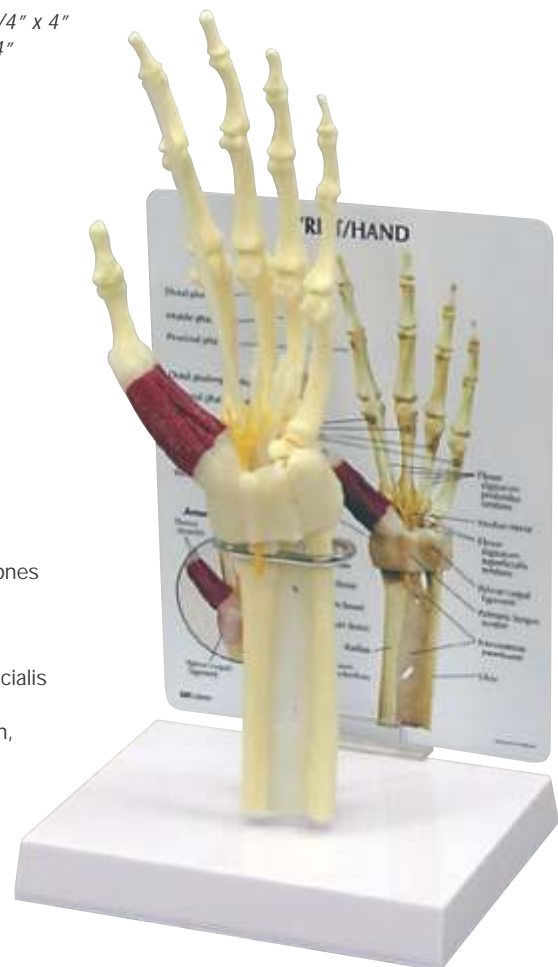
#### #1830 BASIC ELBOW

Full size normal right elbow joint model includes: humerus, radius and ulna bones; joint capsule; annular ligament of radius, oblique cord, radial collateral and ulnar collateral ligaments.

*Model size: 8-1/2" x 2-1/4" x 4"*

*Card size: 6-1/2" x 5-1/4"*

*Base size: 6-1/2" x 5"*



#### #1920 HAND/WRIST CARPAL TUNNEL SYNDROME

Full size solid cast of hand, wrist and forearm bones features: distal, middle and proximal phalanges, distal and proximal phalanges of the thumb, metacarpal bones, thenar muscle, palmar carpal ligament, median nerve, flexor digitorum superficialis and profundus tendons, triquetrum, pisiform, hamate, hook of hamate, palmaris longus tendon, interosseous membrane, radius and ulna.

*Model size: 11-1/2" x 3-3/4" x 1-1/4"*

*Card size: 6-1/4" x 8-1/4"*

*Base size: 6-1/2" x 5"*

## Contact Information

---

**Nanette da Fonseca**  
MANAGING DIRECTOR

- Mobile: 082 443 8727
- Tel: 011 465 7841/2
- Fax: 086 265 9869



"Your partner in **Healthcare Marketing**"

INFODOC ©2013

*Educational models shown in this catalog are not toys and are not suitable for children under age 12*

