



STOCK MODEL CATALOG 2013

VETERINARY MODELS

InfoDoc
"Your partner in Healthcare Marketing"
HEALTH

The Experts in Anatomical Models

VETERINARY MODELS

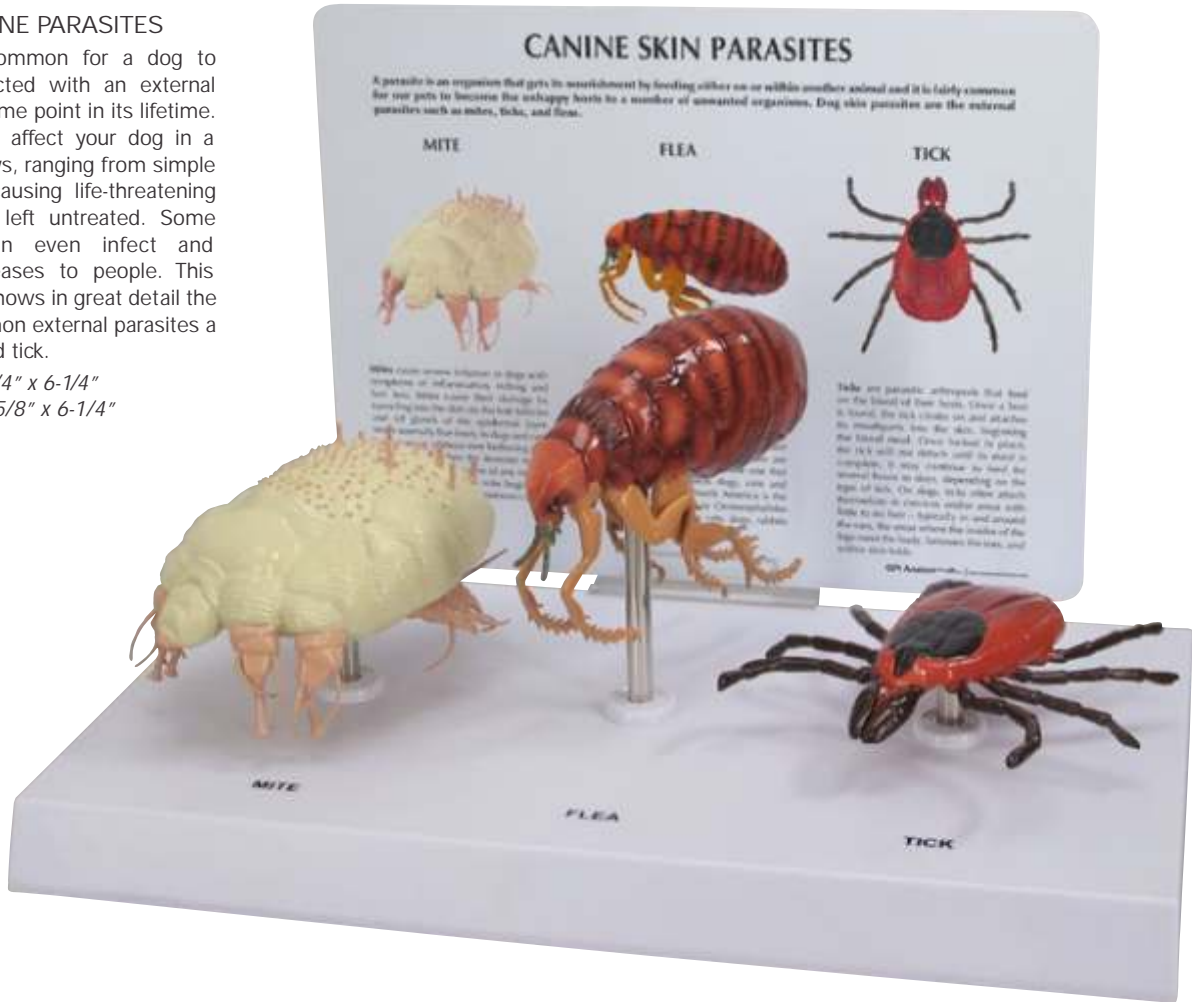
NEW!

#9095 CANINE PARASITES

It is fairly common for a dog to become infected with an external parasite at some point in its lifetime. Parasites can affect your dog in a variety of ways, ranging from simple irritation to causing life-threatening conditions if left untreated. Some parasites can even infect and transmit diseases to people. This model here shows in great detail the 3 most common external parasites a mite, flea, and tick.

Card size: 8-1/4" x 6-1/4"

Base size: 10-5/8" x 6-1/4"



Mite
Size: 4" x 2-1/4" x 2-1/2"



Flea
Size: 4" x 1-1/2" x 3"



Tick
Size: 4" x 4 x 1-1/4"

#9051 CANINE 4-STAGE KNEE

Set of four life-size models illustrate degenerative joint disease (osteoarthritis). Disease-free (normal) knee includes additional important structures including ligaments, tendons and patella. The other three models demonstrate progressive articular surface degeneration and the development of osteophytes (bone spurs).

Model size: (4 each) 2" x 3-1/2" x 7"

Card size: 8-1/4" x 6-1/4"

Base size: 10-5/8" x 6-1/4"



TOP SELLER

#9050 CANINE KNEE

Average size knee with femur, fibula, patella and tibia bones, lateral and medial meniscus, anterior and posterior cruciate ligaments, plus six more ligaments and tendons.

Model size: 2" x 3-1/2" x 7"

Card size: 5-1/4" x 6-1/4"

Base size: 6-1/2" x 5"



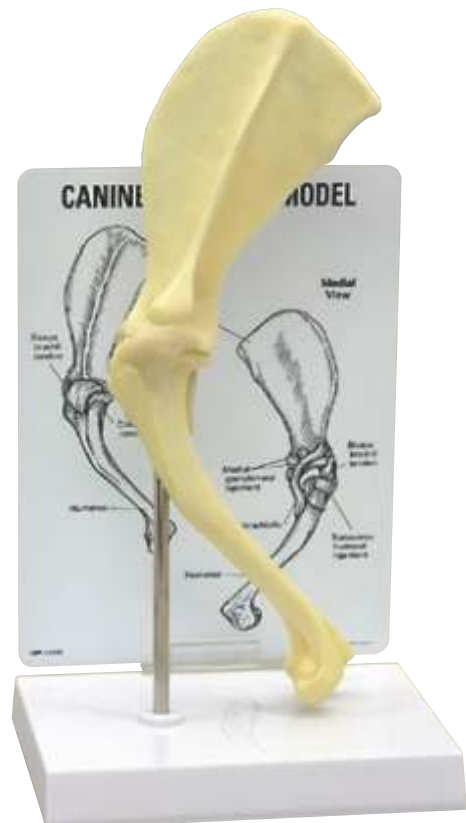
#9075 CANINE SHOULDER

Average size shoulder with scapula, humerus, biceps brachii tendon, coracobrachialis tendon, lateral glenohumeral ligament, medial glenohumeral ligament and transverse humeral ligament.

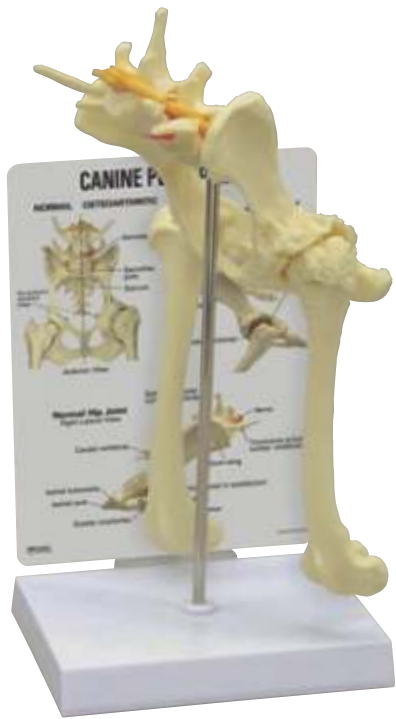
Model size: 11-1/8" x 3" x 2"

Card size: 6-1/4" x 8-1/4"

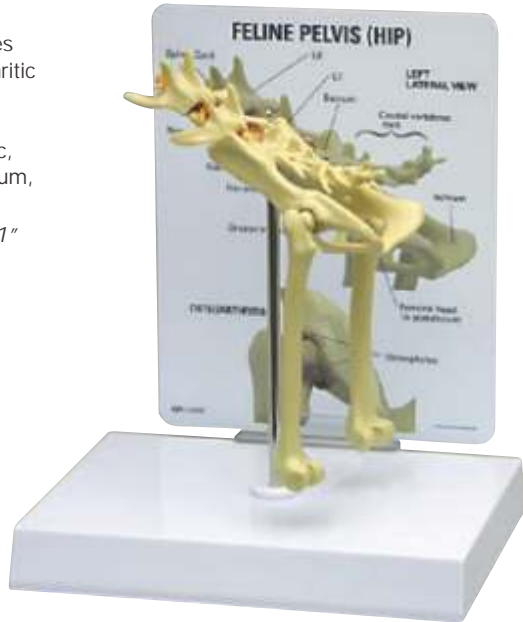
Base size: 6-1/2" x 5"



TOP SELLER



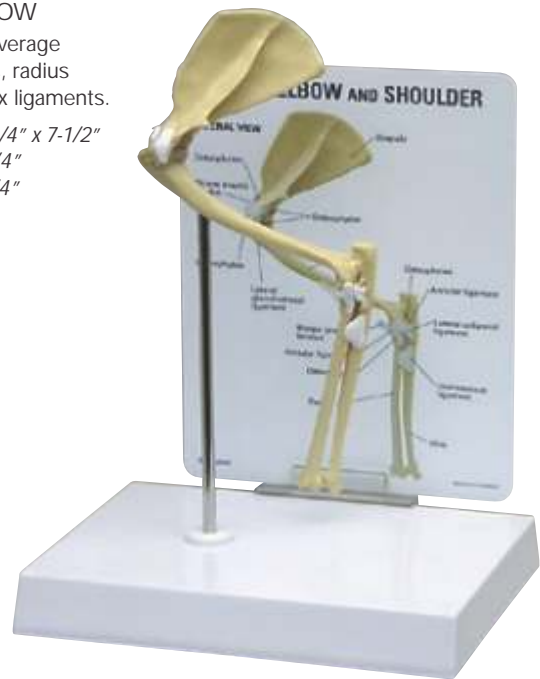
#9060 CANINE PELVIS
 Average size pelvis features both normal and osteoarthritic bone, body of ilium, greater trochanter, head in acetabulum, herniated disc, neck of femur, nerve, sacrum, and third trochanter.
Model size: 7" x 5-1/2" x 11"
Card size: 6-1/4" x 8-1/4"
Base size: 6-1/2" x 5"



#9160 FELINE PELVIS
 Average size feline pelvis features: femur, vertebrae L6, L7, caudal (tail), and spinal cord. Osteophytes (bone spurs) indicate degenerative osteoarthritis of the hip joint.
Model size: 7" x 4-1/4" x 2-1/4"
Card size: 5-1/4" x 6-1/2"
Base size: 6-1/2" x 5"



#9070 CANINE ELBOW
 Healthy left elbow of average size includes: humerus, radius and ulna bones; plus six ligaments.
Model size: 9-1/2" x 1-3/4" x 7-1/2"
Card size: 6-1/4" x 8-1/4"
Base size: 8-7/8" x 6-1/4"



#9170 FELINE ELBOW / SHOULDER
 Average size feline elbow and shoulder features normal bone and osteoarthritic changes to joints. Model includes the following bones: scapula, humerus, radius, ulna and nine important ligaments and tendons.
Model size: 7-3/4" x 4" x 7/8"
Card size: 5-1/4" x 6-1/2"
Base size: 6-1/2" x 5"



#9080 CANINE VERTEBRAL COLUMN
 Vertebral column of average size features five lumbar vertebrae and discs, caudal (tail) vertebrae and sacrum.
Model size: 8" x 2" x 2"
Card size: 6-1/2" x 5-1/4"
Base size: 6-1/2" x 5"



#9200 CANINE EAR – NORMAL / INFECTED

This two-sided, average size, canine ear depicts: a normal side with cochlea, auditory ossicles, auditory tube, tympanic bulla, middle ear cavity, tympanic membrane, horizontal canal, vertical canal, auricular cartilage, pinna and temporalis muscle abnormal side illustrates inflamed inner ear structures, inflammatory exudate in tympanic bulla, ear canal with partial occlusion from cellular hyperplasia, inflammatory exudate and an inflamed outer ear.

Model size: 4-3/4" x 2-3/4" x 2"

Card size: 5-1/4" x 6-1/2"

Model does not include a base

Base options are available upon request for additional cost.

#9190 FELINE JAW

#9195 CANINE JAW

Average size canine and feline jaw depicts healthy teeth on the right side and diseased and damaged teeth on the left. Featured pathologies: fractured canine, periodontal disease, tartar accumulation, plaque, gingivitis, worn incisors, retained deciduous tooth, missing premolar and (canine) gingival recession. Jaws open, close and separate for closer study.

Canine model size: 4-3/4" x 2-3/4" x 2"

Feline model size: 2-3/4" x 2" x 1-1/8"

Card size: 6-1/2" x 5-1/4"

No Base



TOP SELLER

#9191 FELINE JAW – CLEAR

#9196 CANINE JAW – CLEAR

Healthy canine and feline hinged jaw showing the roots of all teeth (incisors, canine, premolars, molars). Jaws open, close and separate for closer study.

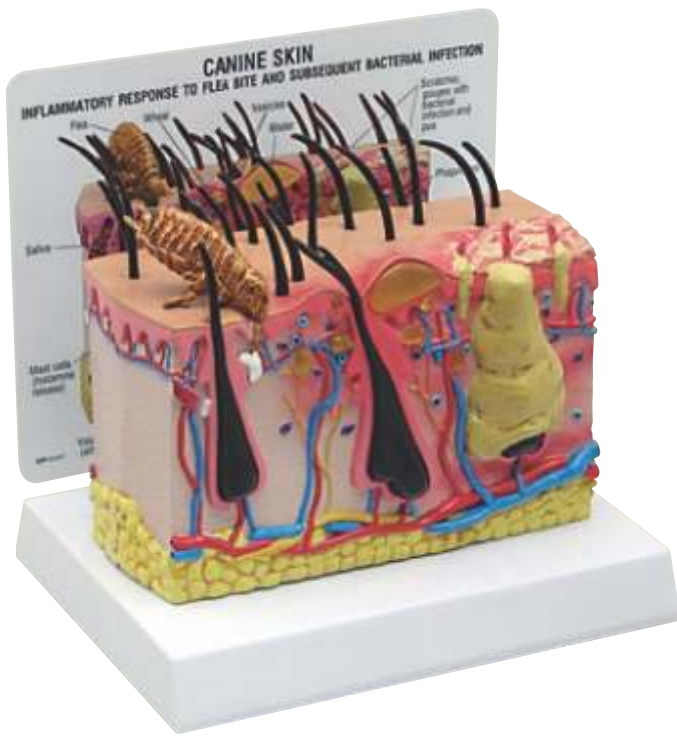
Canine model size: 4-1/4" x 3" x 2"

Feline model size: 2-3/4" x 2" x 1-1/8"

Card size: 6-1/2" x 5-1/4"

No Base



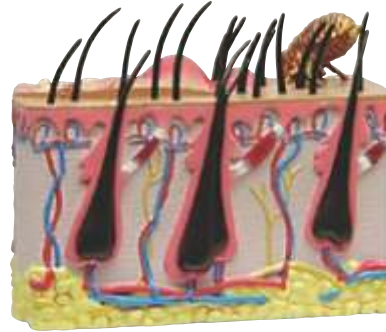


#9090 CANINE SKIN WITH FLEA BITE

Enlarged cross-section of canine skin. One side features normal skin anatomy extending from the epidermis down to the layer of subcutaneous fat. The reverse side demonstrates the progressing changes of a flea bite from wheal to infected pustule.

Model size: 5-3/4" x 4-1/2" x 3"

Card size: 6-1/2" x 5-1/4"



Reverse side of model shows normal skin



#9141 FELINE HEART / LUNG

Average feline heart and lungs infested with a single heartworm (*Dirofilaria immitis*). Cut-away view demonstrates structures in the heart (right ventricle, pulmonary trunk, pulmonary arteries) and lungs where adult-stage heartworms are normally found. The cut section of the lung indicates patches of heartworm-induced irritation.

Model size: 3-3/4" x 2-3/4" x 2-1/2"

Card size: 6-1/2" x 5-1/4"

Base size: 6-1/2" x 5"

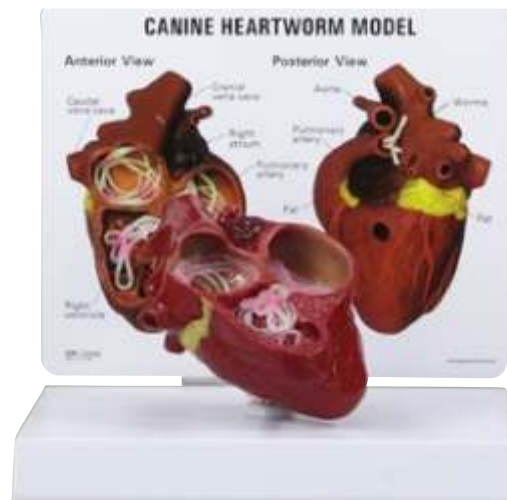
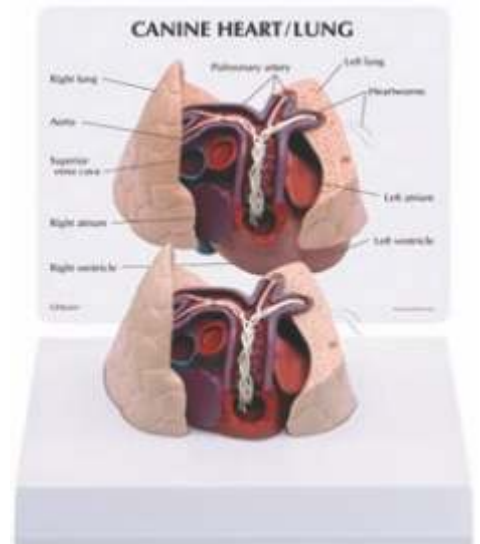
#9151 CANINE HEART / LUNG

Average canine heart and lungs infested with heartworms (*Dirofilaria immitis*). Cut-away view demonstrates structures in the heart (right ventricle, pulmonary trunk, pulmonary arteries, and lungs) where adult-stage heartworms are normally found.

Model size: 3-3/4" x 2-3/4" x 2-1/2"

Card size: 6-1/2" x 5-1/4"

Base size: 6-1/2" x 5"



#9150 CANINE HEARTWORM

Cut-away view of a distended heart with arteries, cardiac at and three sections of heartworm parasites.

Model size: 3" x 3-1/2" x 4-1/4"

Card size: 6-1/2" x 5-1/4"

Base size: 6-1/2" x 5"

Contact Information

Nanette da Fonseca
MANAGING DIRECTOR

- Mobile: 082 443 8727
- Tel: 011 465 7841/2
- Fax: 086 265 9869

infodoc HEALTH
“Your partner in Healthcare Marketing”

INFODOC ©2013

Educational models shown in this catalog are not toys and are not suitable for children under age 12

